

BI-STATE PRIMARY CARE ASSOCIATION



SERVING VERMONT & NEW HAMPSHIRE

SPONSORSHIP PROSPECTUS

2025 – 2026

VERMONT AND
NEW HAMPSHIRE

Celebrating Our 40th Anniversary!



CONTENTS

- 03 Introduction

- 04 About Bi-State

- 05 Primary Care Champion

- 06 *New!* Primary Care Conference Reception

- 07 Primary Care Conference

- 08 Bi-State Awards Ceremony

- 09 Leadership Development Program

- 10 *New!* Maternal Health Convening

- 11 Preparing the UDS Report Training

- 12 Annual Impact Report and Health Center Week

- 13 Newsletter, Website, and Primary Care Sourcebooks



www.bistatepca.org

Contact Colleen Dowling, Communications and Development Manager,
at cdowling@bistatepca.org or 610-283-2175.

Celebrating 40 years as VT and NH's PCA!



Bi-State Primary Care Association Board of Directors

Pictured L-R: Kayla Davis, Co-Executive Director/Project Director, Battenkill Valley Health Center; Henry Och, President and CEO, Harbor Care; Michael Costa, President and CEO, Gifford Health Care; Andy Barter, CEO, Little Rivers Health Care; Tess Stack Kuenning, President and CEO, Bi-State Primary Care Association; Kris McCracken, President and CEO, Amoskeag Health; Greg White, Co-CEO, Lamprey Health Care; Ken Gordon (Bi-State's Board Chair), CEO, Coös County Family Health Services; Michael Gardner, CEO, Community Health; Robert MacLeod, CEO, Mid-State Health Center

With gratitude from our President and CEO



Dear Friends,

2026 is a milestone for Bi-State Primary Care Association, marking four decades of building stronger, healthier communities across Vermont and New Hampshire. We are excited to celebrate our 40th anniversary with you! Thanks to the generous support of our sponsors, we have achieved significant advancements in enhancing access to integrated medical, dental, vision, pharmacy, and behavioral health care services in every county of Vermont and New Hampshire.

We extend our gratitude for the strategic alliances with business entities, nonprofit organizations, charitable foundations, our state and national associations, and other key partners. Your commitment to both our states' Community Health Centers and their patients makes our efforts possible.

Bi-State's sponsor benefits are tailored to support our esteemed business partners in achieving your objectives. These benefits aim to amplify the reach and frequency of your external communications. For detailed information, please refer to the subsequent pages. To streamline the sponsorship process, we offer convenient online registration for most opportunities. Kindly visit our website at www.bistatepca.org/events-sponsorship for further details.

We look forward to our continued collaboration with you to enhance primary care accessibility for all. Thank you for your unwavering support of Bi-State and our members - including Community Health Centers, Vermont's Free and Referral Clinics, Community Health Access Network, North County Health Consortium, and Area Health Education Centers - and the residents of both states whom we proudly serve.

Sincerely,

Tess Stack Kuenning, CNS, MS, RN
President and Chief Executive Officer



Our Vision

Healthy individuals, families, and communities with quality health care for all.

Our Mission

Advance access to comprehensive primary care services for all, with special emphasis on those most in need in Vermont and New Hampshire.

About Us

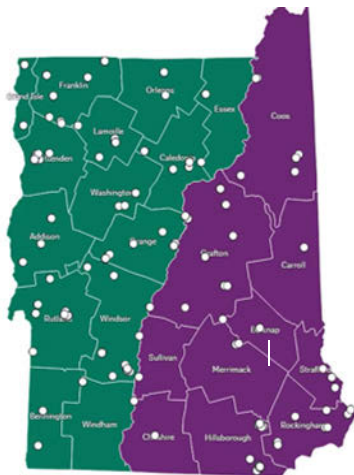
Bi-State Primary Care Association was founded in 1986 by a small group of committed individuals with a shared goal to enhance access to primary care services across New Hampshire and Vermont. Our journey started with just one Federally Qualified Health Center (FQHC) in each state, collectively serving 10,000 individuals. Today, we've grown to encompass 23 Community Health Centers and affiliated organizations, delivering a comprehensive range of medical, dental, mental health, and substance use disorder services to over 330,000 individuals, regardless of ability to pay.



Bi-State Primary Care Association's Members serve in every corner of New Hampshire and Vermont, caring for over 330,000 patients each year.

Vermont Members

- ❖ Battenkill Valley Health Center
- ❖ Community Health Centers
- ❖ Community Health
- ❖ Gifford Health Care
- ❖ Lamoille Health Partners
- ❖ Little Rivers Health Care
- ❖ Mountain Community Health
- ❖ North Star Health
- ❖ Northern Counties Health Care
- ❖ Northern Tier Center for Health
- ❖ Planned Parenthood of Northern New England
- ❖ The Health Center
- ❖ Vermont's Free & Referral Clinics



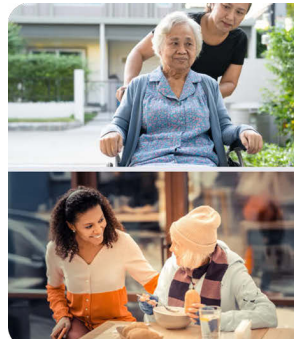
New Hampshire Members

- ❖ Ammonoosuc Community Health Services
- ❖ Amoskeag Health
- ❖ Community Health Access Network
- ❖ Coös County Family Health Services
- ❖ Greater Seacoast Community Health
- ❖ Harbor Care
- ❖ Health Care for the Homeless Program of Manchester
- ❖ Lamprey Health Care
- ❖ Mid-State Health Center
- ❖ NH Area Health Education Center Program
- ❖ North Country Health Consortium
- ❖ Planned Parenthood of Northern New England
- ❖ White Mountain Community Health Center



VT's FQHCs serve 198,000+ patients, including:

- Nearly 1 in 3 of all Vermonters
- 34,000+ Children
- 45,600+ Medicare enrollees (39% of VT Medicare enrollees)
- 6,000 Veterans
- 2,500+ Homeless individuals (78% of Vermonters experiencing homelessness)
- 17,000+ Uninsured patients (82% of VT's uninsured population)
- 54,000+ Medicaid enrollees (38.5% of VT Medicaid enrollees)



NH's FQHCs serve 92,000+ patients, including:

- 19,500+ Children (21% of NH FQHC patients are children)
- 18,500+ Older Adults (20% of NH FQHC patients are older adults)
- ~2,700 Veterans
- ~5,000 Homeless individuals
- 13,000+ Uninsured patients (1 in 5 of NH's uninsured population)
- 28,000+ Medicaid enrollees (1 in 6 of NH Medicaid enrollees)

Primary Care Champion: *Year-Long Presence*

Bi-State is the federally designated Primary Care Association for Community Health Centers in NH and VT. Our staff work with public health departments, emergency preparedness agencies, business and nonprofit leaders, charitable foundations, elected officials, and Members of Congress. We educate and advocate for the resources and policies necessary to support the critical role of our states' health centers to provide access to affordable, quality primary health care to populations with limited access to care. Bi-State members include Community Health Centers, Area Health Education Centers, VT Free and Referral Clinics, Planned Parenthood, Community Health Access Network, and North Country Health Consortium.

Sponsor Value: Primary Care Champions maintain a year-round presence among Bi-State member organizations including Platinum exhibitor benefits at events, personal introductions, information-sharing, presenting opportunities, and promotion on Bi-State's Facebook page and among staff contacts. Bi-State partners with Champions in a mutually-supportive environment.



Bi-State's 2025 Primary Care Champions, AmeriHealth Caritas New Hampshire and NH Healthy Families

Annual Investment: \$35,000

Champion Benefits:

- Complimentary Platinum Sponsor Benefits at three events of your choice:
 - National Health Center Week
 - Bi-State Awards Ceremony
 - Preparing the UDS Report
 - Primary Care Conference
 - *NEW!* Maternal Health Convening
- Opportunity to introduce yourself at a Bi-State Board Meeting
- Direct notification of new and/or expanding Community Health Centers
- Sponsor recognition in Bi-State's quarterly newsletter
- *Spotlight on Sponsors* feature quarterly on FB
- Sponsor credit in Bi-State's Annual Impact Report

Photos from last year at Lake Morey Resort



The Primary Care Conference is our biggest networking event of the year.



View of Lake Morey in Fairlee, VT



2025 Bi-State Awardees honored for excellence in serving NH & VT residents

40th Anniversary Celebration: Primary Care Conference Reception

May 19, 2026 | 6:00 - 8:00 pm
Lake Morey Resort | Fairlee, VT

In celebration of our 40th Anniversary as the VT and NH Primary Care Association, we are thrilled to introduce our newest sponsor benefit! Help us kick off our Primary Care Conference by sponsoring our first-ever Welcome Reception. This high-energy evening will offer networking opportunities and brand visibility as attendees connect over food, drink, and shared mission. As a sponsor, you're welcome to provide branded items for added exposure.

Sponsor Value: As inaugural sponsor of the networking reception, your company will be front-and-center during a lively happy hour.



Networking Reception Platinum Sponsor: \$6,000

- Brief welcome speech during happy hour
- Sponsor acknowledged in Opening & Closing Remarks
- Sponsor logo prominently placed on signage
- Spotlight on Sponsors* group feature on FB pre/post-event
- Ad, logo, and video on break-time slideshow
- Full-page ad in event program/brochure
- Registered Primary Care Conference attendee list provided pre-event
- Sponsor logo on event registration website
- Sponsor credit in Bi-State's Annual Impact Report

Networking Reception Gold Sponsor: \$4,000

- Sponsor acknowledged in Opening Remarks
- Sponsor logo prominently placed on signage
- Spotlight on Sponsors* group feature on FB pre/post-event
- Ad and logo on break-time slideshow
- Half-page ad in event program/brochure
- Registered Primary Care Conference attendee list provided pre-event
- Sponsor logo on event registration website
- Sponsor credit in Bi-State's Annual Impact Report

Networking Reception Bronze Sponsor: \$2,000

- Sponsor logo on signage
- Spotlight on Sponsors* group feature on FB pre/post-event
- Ad and logo on break-time slideshow
- Quarter-page ad in event program/brochure
- Registered Primary Care Conference attendee list provided pre-event
- Sponsor logo on event registration website
- Sponsor credit in Bi-State's Annual Impact Report

Primary Care Conference

May 20, 2026 | 8:30 am - 4:00 pm

Lake Morey Resort | Fairlee, Vermont

Sponsor Value: Bi-State's annual Primary Care Conference draws a diverse and influential audience of Community Health Center executives, including leaders in administration, primary care, pediatric care, dental services, behavioral health care, substance use disorder treatment, pharmacy services, information technology, and more. Sponsor benefits include high visibility with exhibit spaces and presentations located in the main conference area. Multiple dedicated breaks and open seating at lunch maximize networking opportunities between sponsors and attendees, fostering meaningful connections and engagement.

Platinum: \$7,500

- Attendance and lunch for three
- Exhibitor 8 ft. table
- Sponsor acknowledged in Opening & Closing Remarks
- Sponsor logo prominently placed on signage
- Spotlight on Sponsors* feature on FB pre/post-event
- Ad, logo, and video (15-sec) on break-time slideshow
- Full-page ad (8.5x11) in event program
- Sponsor contact in pre/post-event email to attendees
- Registered attendee list provided pre-event
- Awards video sponsor credit on closing screen
- Sponsor logo on event registration website
- Sponsor credit in Bi-State's Annual Impact Report

Gold: \$5,000

- Attendance and lunch for two
- Exhibitor 8 ft. table
- Sponsor acknowledged in Closing Remarks
- Sponsor logo on signage
- Spotlight on Sponsors* feature on FB pre-event
- Ad and logo on break-time slideshow
- Half-page ad (8.5x5.5) in event program
- Sponsor contact in pre/post-event email to attendees
- Registered attendee list provided pre-event
- Sponsor logo on event registration website
- Sponsor credit in Bi-State's Annual Impact Report

Silver: \$3,500

- Attendance and lunch for two
- Exhibitor 8 ft. table
- Sponsor logo on signage
- Spotlight on Sponsors* group feature on FB post-event
- Ad and logo on break-time slideshow
- Third-page ad (8.5x3.5) in event program
- Registered attendee list provided pre-event
- Sponsor logo on event registration website
- Sponsor credit in Bi-State's Annual Impact Report

Bronze: \$2,000

- Attendance and lunch for one
- Shared Exhibitor 8 ft. table with one other sponsor
- Sponsor logo on signage
- Spotlight on Sponsors* group feature on FB post-event
- Sponsor logo and ad on break-time slideshow
- Quarter-page ad (4.25x5.5) in event program
- Registered attendee list provided pre-event
- Sponsor logo on event registration website
- Sponsor credit in Bi-State's Annual Impact Report

Stand Out with these Exclusive Sponsorship Opportunities

(Available to pre-registered exhibitors - table not included)

★ **Keynote Speaker Introduction - \$3,000**

- Introduce Primary Care Conference Keynote Speaker
- *Spotlight on Sponsors* feature on FB pre/post-event

★ **Raffle Master of Ceremonies - \$2,000**

- Serve as Master of Ceremonies for Raffle Drawing
- *Spotlight on Sponsors* feature on FB post-event

Nonprofit: \$1,000

Limited to 501(c)(3) Charitable Organizations with AOB under \$5M

- Attendance and lunch for one
- Shared Exhibitor 8 ft. table with one other sponsor
- Sponsor logo on signage
- Spotlight on Sponsors* group feature on FB post-event
- Sponsor logo and ad on break-time slideshow
- Quarter-page (4.25x5.5) ad in event program
- Registered attendee list provided pre-event
- Sponsor logo on event registration website
- Sponsor credit in Bi-State's Annual Impact Report



Primary Care Conference: Awards Ceremony and Luncheon

Wednesday, May 20, 2026

Lake Morey Resort | Fairlee, Vermont

Recognition of Outstanding Contributions towards Expanding Access to Primary Care for All



Established in 1996, the Bi-State Awards are presented to individuals who have made outstanding contributions towards increasing access to primary care in New Hampshire and Vermont. Awardees are nominated by their peers and selected by Bi-State's Board of Directors. Bi-State has presented 223 awards to date.

Sponsor Value: The Bi-State Awards Ceremony video premieres at the Primary Care Conference with distinguished awardees as our special guests. The video receives wide exposure on our website and social media channels and is directly distributed to our extensive media list and contacts spanning health care organizations, businesses, nonprofits, and professional associations, as well as government agency staff, elected officials, and our Members of Congress.

Bi-State Annual Awards Ceremony Video Sponsorship



Platinum \$4,000

- Attendance for two at the Primary Care Conference
- Sponsor logo on Awardee signage
- Sponsor logo on the Awards video closing screen
- Spotlight on Sponsors feature on FB pre-event
- Sponsor logo on FB promotion
- Sponsor credit in Bi-State's Annual Impact Report

Gold: \$2,500

- Attendance for one at the Primary Care Conference
- Sponsor logo on Awardee signage
- Sponsor logo on Awards video closing screen
- Sponsor logo on FB promotion
- Sponsor credit in Bi-State's Annual Impact Report

2026-2027 Leadership Development Program

Bi-State's Leadership Development Program offers dynamic and interactive educational sessions to accelerate the career growth of Community Health Center professionals. Over the course of 10 sessions, participants build knowledge and new skills in areas such as leadership, clinical quality, advocacy, finance, and management. Based on over 110 alumni testimonials, it is evident that investment in this program is successfully retaining staff and expanding the skills of the workforce that provides primary care services to over 300,000 individuals of all ages currently receiving health care at their local community health center in VT and NH.

Sponsor Value: By sponsoring this program, you're investing in the people and ideas that strengthen community health centers, advance the health of people across NH and VT, and build a more sustainable health care system. Your support helps develop health center leaders who drive innovation, improve care delivery, and create healthier, more resilient communities.



- ★ *Empowering Change-Makers*
- ★ *Advancing Health*
- ★ *Creating Lasting Impact*

LDP Champion \$8,000

- Attendance at one session of your choice in the series
- Sponsor logo on LDP promotional material
- Sponsor acknowledged in Opening & Closing Remarks each session
- Sponsor may introduce company (5 minutes) at one virtual or in-person session
- Sponsor logo prominently placed on signage at in-person sessions
- Spotlight on Sponsors* feature on FB quarterly during the series
- Sponsor-provided :60 slide show played during lunch at all in-person sessions
- Sponsor logo on each session agenda
- Sponsor brochure distributed at first in-person session (due 4 weeks in advance)
- Sponsor credit in Bi-State's Annual Report

LDP Session Leader: \$3,000 per session

- Sponsor acknowledged in the Opening Remarks of sponsored session
- Spotlight on Sponsors* feature on FB post-sponsored session
- Sponsor brochure distributed digitally and in print (due 4 weeks in advance)
- Sponsor credit in Bi-State's Annual Impact Report

LDP Partner \$6,000

- Attendance at one session of your choice in the series
- Sponsor logo on signage at all in-person sessions
- Sponsor acknowledged in Opening Remarks of each session
- Sponsor logo on all LDP promotional material
- Spotlight on Sponsors* feature on FB pre/post series
- Sponsor brochure distributed at first in-person session (due 4-weeks in advance)
- Sponsor credit in Bi-State's Annual Impact Report



Stand Out with these Exclusive Sponsorship Opportunities

★ LDP Scholarship Sponsor: \$3,000

- Covers the registration fee for an individual to participate in the program
- Sponsors may cover the cost of multiple scholarships
- Listing on LDP page of Bi-State's website
- Logos are included on the agendas for each session
- Sponsor credit in Bi-State's Annual Impact Report

★ LDP Nonprofit Sponsor: \$1,500

Limited to 501(c)(3) Charitable Organizations with Annual Operating Budget under \$5M.

- Sponsor acknowledged in the Opening Remarks of first program session
- Sponsor logo on all LDP promotional materials
- Sponsor credit in Bi-State's Annual Impact Report

Clinical Quality Symposium:

Building & Expanding Collaborative Systems for Maternal Health

Oct. 28, 2025 | 8:30 am - 4:00 pm | Lake Morey Resort, VT

Bi-State's Maternal Health Convening is a first-ever event drawing maternal health experts, health center providers, community organizations, state and local health officials, and other maternal health stakeholders, with the goal of fostering cross-program collaborations and to share evidence-based models and promising practices that support improved maternal health. As valued sponsors, you are welcome to attend all educational sessions with the understanding that company and product promotion is not permitted within continuing education activity spaces.

Sponsor Value: Exhibitors will be prominently displayed in the same location as food and beverage breaks and a small poster session, ensuring high traffic. There is open seating a lunch, offering an excellent chance to connect with attendees.

Platinum: \$7,500 - Lunchtime Sponsor

- Attendance for two
- Exhibitor 8 ft. table
- Sponsor acknowledged in Opening & Closing Remarks, and when attendees are dismissed for lunch
- Sponsor logo prominently placed on signage, including sign reserved for Lunchtime Sponsors in dining room
- Spotlight on Sponsors* feature on FB pre/post-event
- Full-page ad (8.5x11) in conference program
- Sponsor contact in pre/post-email to attendees
- Registered attendee list provided pre-event
- Sponsor logo on event registration website
- Sponsor credit in Bi-State's Annual Impact Report

Lunchtime Promoter: \$1,500

Available to Platinum/Lunchtime sponsors as an add-on; table not included.

- Sponsor invited to provide a 2-minute introduction to product/services at the end of the lunch hour.
 - Maximum of 2 slots; first-come, first-serve.
- (Microphone is available, but projection/slides are not possible in dining room.)

Gold: \$5,000 - Breakfast Sponsor

- Attendance for two
- Exhibitor 8 ft. table
- Sponsor acknowledged in Opening & Closing Remarks
- Sponsor logo prominently placed on signage
- Spotlight on Sponsors* feature on FB pre/post-event
- Half-page ad (8.5x5.5) in conference program
- Sponsor contact in pre/post-email to attendees
- Registered attendee list provided pre-event
- Sponsor logo on event registration website
- Sponsor credit in Bi-State's Annual Impact Report

Silver: \$3,500 - Morning or Afternoon Break Sponsor*

**Half will be assigned AM break, and half will be assigned PM break*

- Attendance for one
- Exhibitor 8 ft. table
- Sponsor acknowledged when attendees are dismissed for the appropriate break
- Sponsor logo on signage
- Spotlight on Sponsors* feature on FB pre/post-event
- Third-page ad (8.5x3.5) in conference program
- Sponsor contact in pre/post-email to attendees
- Registered attendee list provided pre-event
- Sponsor logo on event registration website
- Sponsor credit in Bi-State's Annual Impact Report

Bronze: \$2,000 - General Sponsor

- Attendance for one
- Shared Exhibitor 8 ft. table with one other sponsor
- Spotlight on Sponsors* group feature on FB pre/post-event
- Quarter-page ad (4.25x5.5) in conference program
- Sponsor contact in pre/post-email to attendees
- Registered attendee list provided pre-event
- Sponsor logo on signage and event registration website
- Sponsor credit in Bi-State's Annual Impact Report

Nonprofit: \$1,000

Limited to 501(c)(3) Charitable Organizations with AOB under \$5M

- Attendance for one
- Shared Exhibitor 8 ft. table with one other sponsor
- Spotlight on Sponsors* group feature on FB pre/post-event
- Quarter-page ad (4.25x5.5) in conference program
- Sponsor contact in pre/post-email to attendees
- Registered attendee list provided pre-event
- Sponsor logo on signage and event registration website
- Sponsor credit in Bi-State's Annual Impact Report

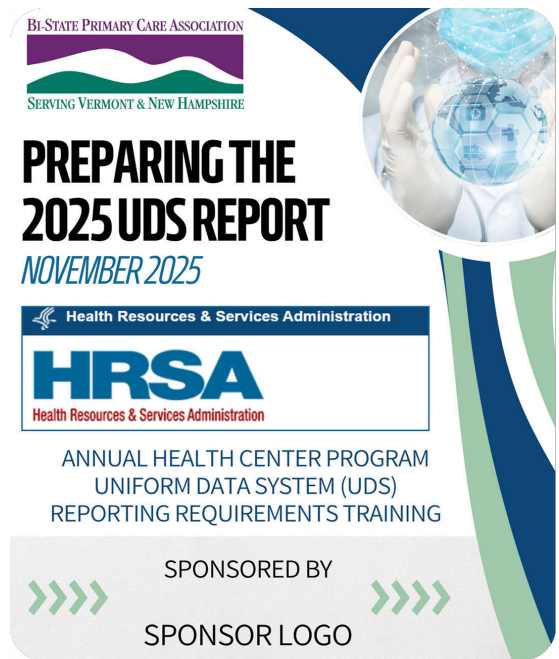
Preparing the UDS Report

November 12-13, 2025

Annual Training for Federally Qualified Health Centers

The Uniform Data System (UDS) is an annual reporting system that gathers standardized information on health center performance including patient demographics, staffing, utilization, diagnoses, quality of care, health outcomes, and finances as required to meet the U.S. Department of Health and Human Services reporting requirements. The report is used to evaluate and enhance health center performance, ensure legislative compliance, track trends, address disparities, improve quality, and reduce health care costs.

Sponsor Value: This interactive 6-hour virtual training held over two days is attended by Vermont and New Hampshire federally qualified health center staff and may include chief financial and medical officers, billing supervisors, clinical directors, controllers, systems managers, health quality directors, medical coders, and informatics specialists.



Platinum \$2,000

- Attendance for three
- Sponsor acknowledged during Opening and Closing Remarks
- Sponsor invited to greet attendees on opening day (60 seconds)
- Spotlight on Sponsors feature on FB pre-and post-event
- Sponsor ad on waiting room slideshow each day
- Registered attendee database provided pre-event
- Sponsor logo on event registration website
- Sponsor credit in Bi-State's Annual Impact Report

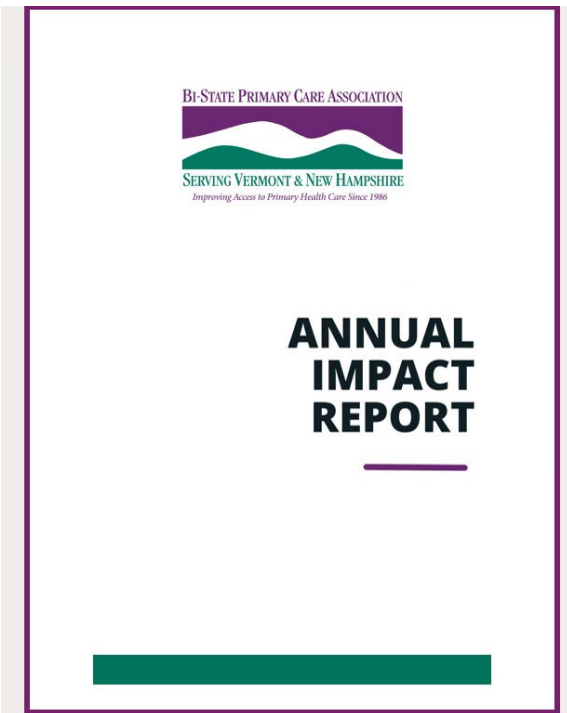
Gold: \$1,500

- Attendance for two
- Sponsor acknowledged during Opening and Closing Remarks
- Spotlight on Sponsors feature on FB pre-event
- Sponsor ad on waiting room slideshow each day
- Registered attendee database provided post-event
- Sponsor logo on event registration website
- Sponsor credit in Bi-State's Annual Impact Report

Silver: \$750

- Attendance for one
- Sponsor acknowledged during Opening Remarks
- Spotlight on Sponsors group feature on FB post-event
- Sponsor ad on waiting room slideshow each day
- Sponsor logo on event registration website
- Sponsor credit in Bi-State's Annual Impact Report

Annual Impact Report - October 2025



The Annual Impact Report is distributed to:

- New Hampshire and Vermont Legislators
- Elected State Officials
- Business Leaders
- Nonprofit Organizations
- Members of Congress
- Governors and Legislative Committees
- State Health Department officials and partners

Sponsor Value: Bi-State's Annual Impact Report highlights organizational initiatives, accomplishments, advocacy, trainings, and programs, ensuring access to primary health care for all in our community. Bi-State's Annual Impact Report is widely distributed, featured, and available on our website.

Platinum \$1,500

- Sponsor logo placed on the inside front cover
- Spotlight on Sponsors FB feature upon publication
- Sponsor credit in Bi-State's Annual Impact Report

National Health Center Week

August 2-8, 2026

National Health Center Week raises awareness about the nearly 1,500 community health centers nationwide and the 32.5 million people who depend on their local health center for primary medical, dental, behavioral, mental health, and substance use disorder treatment.

Sponsor Value: National, state, and local media coverage of National Health Center Week, a week-long event celebrated by community health centers and Primary Care Associations located in every state and U.S. Territory.

Sponsors are acknowledged in promotion of National Health Center Week in New Hampshire and Vermont on Bi-State's website and social media channels. Sponsors are welcome to attend all health center public events.

Platinum \$1,500

- Sponsor notified and welcome to attend all public events
- Sponsor logo on FB promotion of NHCW
- *Spotlight on Sponsors* feature 3x during the week
- Sponsor credit in Bi-State's Annual Impact Report



Bi-State's Newsletter - Primary Care Sourcebooks -Website

Newsletter Sponsor: \$800

Bi-State's newsletter is issued four times a year in March, June, September, and December with an aim to provide significant value to our members, health care stakeholders, partners, sponsors, and a wider audience. Through an exclusive sponsorship opportunity for each edition, sponsors may submit a brief (3-4 sentence) promotional message to appear alongside their logo. This customized benefit elevates our partners' value proposition by increasing visibility and engagement within our esteemed community.

Sponsor Value: Bi-State is the primary authority on essential primary health services in NH and VT with a wide scope of affiliations. As the federally designated Primary Care Association for both states, we collaborate with various stakeholders, including Members of Congress, elected officials, and leaders of state government, nonprofit organizations, businesses, and emergency preparedness agencies. Bi-State advocates for unrestricted access to integrated preventive and primary health care services for individuals and families, with an emphasis on ensuring sufficient health care workforce in NH and VT.

Bi-State Website Sponsor - Annual

Website Sponsor: \$1,500 - Opportunity opens in August 2025

Sponsor Value: Bi-State's website enhances visibility, brand association, and community engagement. Direct audience connection boosts brand recognition and credibility. Prominent logo display and corporate social responsibility foster positive relationships, making it a strategic investment in marketing, branding, and community support.

- Sponsor logo, and live link on home page for one year
- Spotlight on Sponsors* feature on FB upon sponsorship confirmation
- Sponsor credit in Bi-State's Annual Impact Report

Primary Care Sourcebook Sponsor - Annual & Exclusive

Bi-State's New Hampshire and Vermont Primary Care Sourcebooks include health policy information and in-depth data on Community Health Centers, including a list of primary care services, patient demographics, public health quality measures, health care workforce data, and our health centers' economic impact in NH and VT.



Sponsor Value: Bi-State's Primary Care Sourcebooks serve as comprehensive resources about Bi-State's members; these online booklets contain a list of member site addresses and key contacts, patient demographics, primary care services offered, patient utilization data, and additional information useful to state and federal policymakers, elected officials, the business and nonprofit community, educational institutions, health care providers, charitable foundations, and the public.

New Hampshire Sponsor: \$1,500

- Sponsor logo on inside front cover
- Spotlight on Sponsors* feature on FB upon publication
- Sponsor credit in Bi-State's Annual Impact Report

Vermont Sponsor: \$1,500

- Sponsor logo on inside front cover
- Spotlight on Sponsors* feature on FB upon publication
- Sponsor credit in Bi-State's Annual Impact Report



Thank you for supporting Bi-State Primary Care Association's 2025 and 2026 events.

Your investment and participation support access to quality primary care.



[Check out](#) *Bi-State Recruitment Center's 30th Anniversary Report!*

Follow us on social media.



BI-STATE PRIMARY CARE ASSOCIATION
525 Clinton Street, Bow, New Hampshire 03304
603-228-2830
61 Elm Street, Montpelier, Vermont 05602
802-229-0002