



Bi-State Primary Care Association  
61 Elm Street, Montpelier, Vermont 05602  
(802) 229-0002  
[www.bistatepca.org](http://www.bistatepca.org)

January 2023

# 2023

# Vermont

**Primary Care Sourcebook**

<b>TABLE OF CONTENTS</b>	
What is a Primary Care Association?	<a href="#"><u>3</u></a>
Bi-State PCA's Vermont Members	<a href="#"><u>4</u></a>
FQHCs, PPNNE, and VFRC	<a href="#"><u>5</u></a>
2023 Public Policy Principles and Goals	<a href="#"><u>6</u></a>
Bi-State Public Policy Priorities	<a href="#"><u>7</u></a>
Member Map	<a href="#"><u>8</u></a>
Payer Mix	<a href="#"><u>9</u></a>
Spotlight: FQHCs Strive to Improve Heart Health	<a href="#"><u>10</u></a>
Spotlight: FQHCs Improve Access to Integrated Primary Care Services	<a href="#"><u>11</u></a>
Economic Impact of FQHCs	<a href="#"><u>12</u></a>
Recruitment Center and Workforce Development	<a href="#"><u>13</u></a>
Workforce Development and Public Policy	<a href="#"><u>14</u></a>
Vermont Rural Health Alliance (VRHA)	<a href="#"><u>15</u></a>
Food Access and Health Care Consortium	<a href="#"><u>16</u></a>
FQHC Funding	<a href="#"><u>17</u></a>
FQHC Federal Requirements	<a href="#"><u>18</u></a>
Member Sites by County	<a href="#"><u>19</u></a>
Member Sites by Organization	<a href="#"><u>20</u></a>
Bi-State's Vermont Members Legislative Representation by Organization	<a href="#"><u>21</u></a>
Bi-State's Vermont Member Legislative Representatives List, 2022-2023	<a href="#"><u>23</u></a>

## What is a Primary Care Association?

Each of the 50 states (or in Bi-State's case, a pair of states) has one nonprofit Primary Care Association (PCA) to serve as the voice for Community Health Centers. These health centers were born out of the civil rights and social justice movements of the 1960s with a clear mission that prevails today: to provide health care to communities with a scarcity of providers and services. That includes bringing comprehensive services to rural regions of the country.

## Community Health Centers ensure everyone has access to primary health care

Community Health Centers provide comprehensive primary care to everyone, regardless of ability to pay. Nationally, health centers serve 1 in 3 people living in poverty, 1 in 5 uninsured persons, and 1 in 5 rural residents. They provide affordable care. The community health system saves, on average, 24% per Medicaid patient. The National Association of Community Health Centers finds that, overall, community health centers save the health care system \$24 billion annually by increasing access to comprehensive, high-quality, preventive and primary care. In response to COVID-19, our health centers have provided vaccinations, testing services, and telehealth services, to keep everyone safe, while also retaining in-person access where needed, including for dental emergencies, throughout the public health emergency.

### Bi-State's Mission

Advance access to comprehensive primary care services for all, with special emphasis on those most in need in Vermont and New Hampshire.

### Bi-State's Vision

Healthy individuals, families, and communities with equitable and quality health care for all.

## Who we are

Bi-State Primary Care Association is a 501(c)3 nonprofit organization, formed by two health and social service leaders in 1986 to expand access to health care in Vermont and New Hampshire. Today, Bi-State represents 26 member organizations across both states that provide comprehensive primary care services to over 312,000 patients at 162 locations. Our members include federally qualified health centers (FQHCs), Free and Referral Clinics, New Hampshire Area Health Education Center programs, Planned Parenthood of Northern New England, networks, and consortia. We provide training and technical assistance for improving programmatic, clinical, and financial performance. We provide workforce assistance and candidate referrals for providers including physicians, dentists, nurse practitioners, and physician assistants. We work with federal, state, and regional policy organizations, foundations, and payers to develop strategies, policies, and programs that support community-based primary health care.

## Bi-State programs include

Workforce and Recruitment

Data Management & Analysis

Food Access and Health Care

Continuous Quality Improvement

# Bi-State Primary Care Association's Vermont Members

## **Battenkill Valley Health Center**

Kayla Davis, Project Director  
Anje Van Berkelaer, MD, Clinical Director  
9 Church Street, PO Box 61  
Arlington, VT 05250  
(802) 375-6566,  
[kayladavis@bvhcvt.org](mailto:kayladavis@bvhcvt.org)  
[www.battenkillvalleyhealthcenter.org](http://www.battenkillvalleyhealthcenter.org)

## **Community Health Centers**

Jeff McKee, CEO  
617 Riverside Avenue  
Burlington, VT 05401  
(802) 264-8190,  
[jmckee@chcb.org](mailto:jmckee@chcb.org)  
[www.chcb.org](http://www.chcb.org)

## **Community Health**

Michael Gardner, CEO  
71 Allen Pond Street, Suite 101  
Rutland, VT 05701  
(802) 855-2080  
[mgardner@chcrr.org](mailto:mgardner@chcrr.org)  
[www.chcrr.org](http://www.chcrr.org)

## **Gifford Health Care**

Daniel Bennett, CEO  
44 S. Main Street, PO Box 2000,  
Randolph, VT 05060  
(802) 728-2304  
[dbennett@giffordhealthcare.org](mailto:dbennett@giffordhealthcare.org)  
[www.giffordhealthcare.org](http://www.giffordhealthcare.org)

## **The Health Center**

John Matthew, MD, CEO  
157 Towne Avenue, PO Box 320  
Plainfield, VT 05667  
(802) 454-8336,  
[jmatthew@together.net](mailto:jmatthew@together.net)  
[www.the-health-center.org](http://www.the-health-center.org)

## **Lamoille Health Partners**

Stuart May, President & CEO  
609 Washington Hwy,  
Morrisville, VT 05661  
(802) 888-0901  
[smay@lamoillehealthpartners.org](mailto:smay@lamoillehealthpartners.org)  
[www.lamoillehealthpartners.org](http://www.lamoillehealthpartners.org)

## **Little Rivers Health Care**

Andy Barter, CEO  
146 Mill Street, PO Box 338  
Bradford, VT 05033  
(802) 222-3023  
[abarter@littlerivers.org](mailto:abarter@littlerivers.org)  
[www.littlerivers.org](http://www.littlerivers.org)

## **Mountain Health Center**

Martha Halnon, CEO  
61 Pine Street  
Bristol, VT 05443  
(802) 453-5028 ext. 7214  
[mhalnon@mountainhealthcenter.com](mailto:mhalnon@mountainhealthcenter.com)  
[www.mountainhealthcenter.com](http://www.mountainhealthcenter.com)

## **North Star Health**

Josh Dufresne, CEO  
25 Ridgewood Road  
Springfield, VT 05156  
(802) 885-2151  
[jdufresne@northstarfqhc.org](mailto:jdufresne@northstarfqhc.org)  
[www.northstarfqhc.org](http://www.northstarfqhc.org)

## **Northern Counties Health Care**

Michael Costa, CEO  
165 Sherman Drive  
St. Johnsbury, VT 05819  
(802) 748-9405 ext. 1519,  
[michaelc@nchcvt.org](mailto:michaelc@nchcvt.org)  
[www.nchcvt.org](http://www.nchcvt.org)

## **Northern Tier Center for Health**

Kathy Benoit, Executive Director  
44 Main Street  
Richford, VT 05476  
(802) 255-5562,  
[kjbenoit@notchvt.org](mailto:kjbenoit@notchvt.org)  
[www.notchvt.org](http://www.notchvt.org)

## **Planned Parenthood of Northern New England**

Lucy Leriche, VP, Vermont Public Affairs  
784 Hercules Drive, Ste 110  
Colchester, VT 05446  
(802) 448-9778  
[lucy.leriche@ppnne.org](mailto:lucy.leriche@ppnne.org)  
[www.ppnne.org](http://www.ppnne.org)

## **Vermont's Free and Referral Clinics**

Olivia Sharrow, Executive Director  
51 Wells Ave. Unit 4  
Colchester VT 05446  
(802) 448-4280  
[director@vtfreeclinics.org](mailto:director@vtfreeclinics.org)  
[vtfreeclinics.org](http://vtfreeclinics.org)



## Federally Qualified Health Centers (FQHCs)

The federal government supports FQHCs as the nation's primary safety net system for health care. FQHCs provide comprehensive services in medically underserved regions. Comprehensive means primary medical, dental, oral, mental health and enabling services (such as translation, transportation, financial assistance navigation, health education, and nutritional assistance). FQHCs accept patients regardless of ability to pay, offer a sliding fee scale, and work with their communities to address a range of barriers to health. FQHCs are governed by a patient-majority board. In Vermont, there are FQHC sites in every county and over a quarter of Vermonters rely on FQHCs for primary care.

### In 2021, FQHCs:

- Served 184,682 patients in Vermont.
- Conducted 711,756 patient visits.
- Offered services in every Vermont county, across 73 sites.



### In 2021, PPNNE:

- Provided care to 16,099 Vermonters.
- Conducted 23,482 patient visits.
- 59% of PPNNE's patients had low incomes.
- Nearly 50% were in their twenties.
- PPNNE currently operates 7 health centers in Vermont.

PPNNE is the region's largest provider of sexual and reproductive health care services, with 15 health centers across Maine, New Hampshire, and Vermont. PPNNE provides high quality, inclusive care to all, including birth control, cancer screening, gender affirming hormone therapy, STI testing and treatment, pregnancy testing, PrEP and PEP, well-person check-ups, and more. PPNNE offers a sliding fee scale and has special programs to greatly reduce the cost of a visit or make it entirely free.



### Vermont's Free and Referral Clinics (VFRC)

is an association of nine member clinics that provide access to dental, medical, and mental health care (on-site or by referral), support with insurance eligibility and enrollment, prescriptions, and a range of other wraparound services, all free of charge. The clinics are supported by the work of 579 volunteers, community hospitals, fundraising, and several grants from the VT Department of Health. VFRC's member clinics are a critical point of care for historically marginalized populations and play an important role in Vermont's health care system and public health efforts.

### In 2021, VFRC:

- Assisted 10,128 Vermonters
- Provided over 33,000 services, including clinical care, referrals or assistance with insurance enrollment.
- Saved an estimated \$3.9M in emergency room use and provided \$2.5M of free medications.



## Bi-State's Vermont 2023 Public Policy Principles

Bi-State Primary Care Association has a steadfast commitment to its members (Federally Qualified Health Centers, Vermont Free and Referral Clinics, and Planned Parenthood of Northern New England) in their missions to meet the health and wellness needs of their communities, families, and patients regardless of insurance status or ability to pay.

We support initiatives that ensure sufficient resources for safety-net providers and promotes the development and retention of a robust and diverse workforce with the goal of increasing access to affordable, high-quality comprehensive care. This goal involves increasing integration between physical, oral, mental, and reproductive health, and substance use disorder treatment services. We also work to reduce health disparities due to race, ethnicity, gender, and sexual orientation.

Bi-State is committed to working with our partners, the Governor and Administration, State Legislature, and Green Mountain Care Board to implement policies that provide our members with the resources to address the challenges from the COVID-19 pandemic and other emerging public health concerns as well as to meet the broader health and wellness needs of Vermont communities as health care delivery evolves.

### Bi-State 2023 Policy Goals:

- **Workforce**: Addressing the strain on Vermont's health care workforce through continued focus on and investments in short- and long-term solutions.
- **Finance**: Addressing the financial burden on health care organizations by increasing Medicaid reimbursement levels and prioritizing investments in primary care.
- **Health Care Delivery**: Implement policies and payment models that support team-based and flexible approaches to care that allow Bi-State members to meet the needs of their patients and communities in a clinically appropriate way.

## **Bi-State Public Policy Priorities: Supporting our members' commitment to meeting the health and wellness needs of their communities, families, and patients.**

### ***Finance***

Reimbursement and funding has not kept up with increases in the cost of providing care. Funding should:

- Be flexible, covering clinically appropriate modalities of care to ensure Vermont's rural and underserved populations have access to needed services including care coordination activities and telehealth.
- Be sufficient for primary care to play a central role in improving population health and shifting health care utilization away from high-cost services consistent with the State of Vermont's stated health care reform goals.
- Include investments in primary care, oral health, mental health, substance use disorder, reproductive health and community-based services by all payers (Medicaid, Medicare, and commercial).

### ***Workforce***

The current workforce crisis is hurting patients through delayed or inaccessible services, increasing the cost of care through higher labor costs and use of higher cost settings, and demoralizing existing staff. Efforts should include:

- Investments for both short-term needs of recruitment and retention and long-term needs around workforce pipeline development, which will be critical to avoiding future workforce crises.
- Approaches that address the full range of positions including health care providers and those that support direct patient care and help run health care organizations.
- Support for Teaching Health Center Implementation and Planning and Development Graduate Medical Education grants to increase the number of residency training slots for primary care physicians.

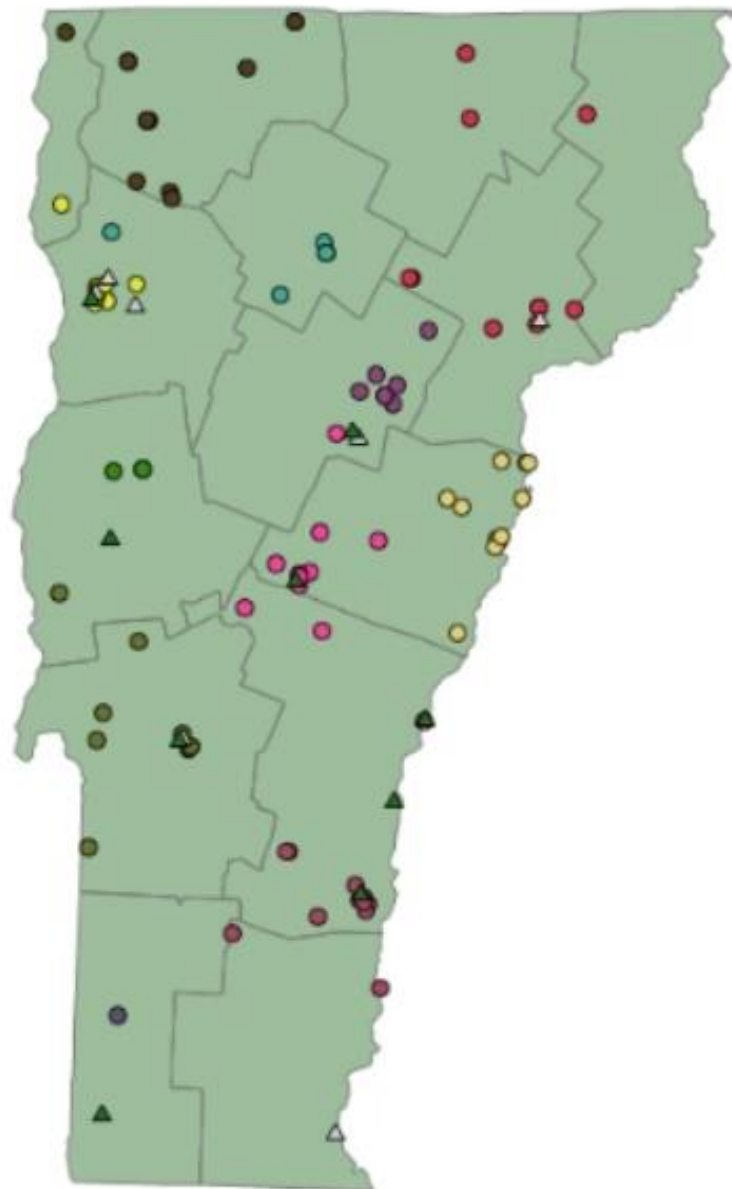
### ***The Future of Health Care Delivery***

Bi-State members recognize many factors affect a person's health outcomes and therefore integrate multiple services to address medical, mental, oral, and reproductive health, as well as social factors.

- Value Based Care models must include safety net providers and strong investments in comprehensive primary care through payment and policies that support flexible and integrated delivery of care.
- Care delivery and coordination models used by payers and ACO or payer-like entities should build upon and advance the integrated community-based primary care models employed by Bi-State members.
- Policies should promote population health and well-being through community-wide partnerships, coordination, education, and integration.












## Our members serve Vermonters in every corner of the state.

Our goal is for geography to never be a barrier to accessing comprehensive, quality services in Vermont. Our members operate in sites across the state, in every county. Our members also look for creative ways to extend their coverage, such as mobile clinics, school visits, and expanded use of telehealth. **Our members had more than 760,000 visits in 2021.**




### VERMONT

#### Organization (Circles)

-  Battenkill Valley Health Center (FQHC)
-  Community Health Centers of Burlington (FQHC)
-  Community Health (FQHC)
-  Gifford Health Care (FQHC)
-  Lamoille Health Partners (FQHC)
-  Little Rivers Health Care (FQHC)
-  Mountain Health Center (FQHC)
-  Northern Counties Health Care (FQHC)
-  Northern Tier Center for Health (FQHC)
-  North Star Health (FQHC)\*
-  The Health Center (FQHC)

---

 Planned Parenthood of Northern New England

 Vermont Free & Referral Clinics

---

\*North Star Health has a location in New Hampshire: Charlestown Family Medicine.

\*Vermont Free & Referral Clinics has a location in New Hampshire: Good Neighbor Health Clinic.



## Our members serve Vermonters regardless of insurance status or ability to pay.

Our FQHCs serve:

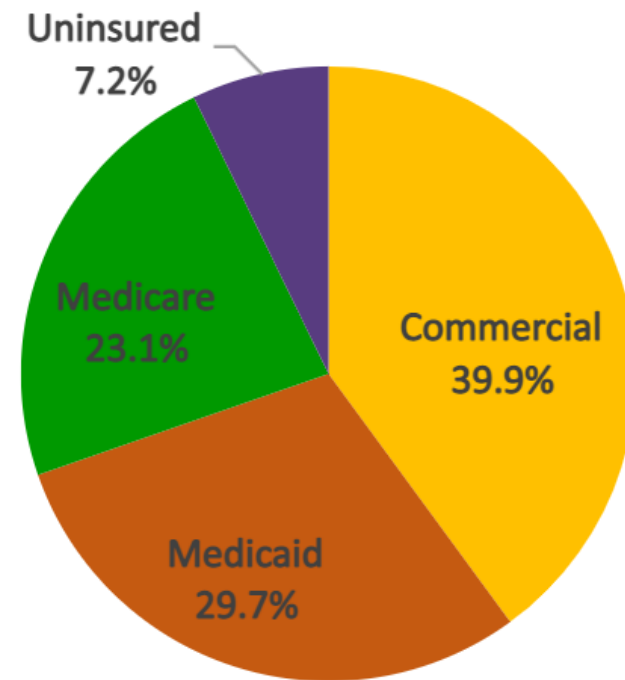
- 38% of Vermont Medicaid enrollees
- 40% of Vermont Medicare enrollees

All of our members provide a sliding fee scale to ensure affordability, including offering free services to those who cannot afford to pay. Free clinics never charge their patients.

Our members also offer financial counseling or assistance in enrolling in programs that can help make health care more affordable for patients who struggle to afford health care.

Our members serve the majority of uninsured Vermonters. Vermont's Free and Referral Clinics report that 31% of patients in 2021 were uninsured, while 32% were underinsured. PPNNE provided over \$917,000 in free or discounted care to Vermonters in 2021.

### FQHC Patients by Payer in 2021



2021 UDS Data

Being able to afford health care is not only about the cost of medical services – our patients balance the price of these services and pharmaceutical prescriptions against competing costs of transportation, rent, heat, childcare, and food. These pressures have increased substantially during COVID-19 and will continue to mount during the recovery period after the public health emergency ends. For this reason, our members offer comprehensive approaches to addressing barriers to care, including connecting patients directly to food resources, working with them to access appropriate medical services from home, and engaging with community partners to support a comprehensive approach to wellness.

# Health Centers strive to improve heart health

FQHCs in Vermont and New Hampshire have exceeded national averages and the Healthy People 2030 hypertension control targets through a variety of techniques to help their patients manage their hypertension.

## Blood Pressure Cuff Lending Library

- Blood Pressure Cuff Lending Libraries have been developed at 13 health centers across VT and NH. These libraries allow identified patients to borrow blood pressure cuffs to monitor their pressures at home, which give the patients and providers important information for self-management of the condition.

## Development of Hypertension and Lipids Protocols

- Health centers in VT and NH have developed protocols for screening and managing of hypertension, hyperlipidemia, and other chronic conditions.

## Medication Therapy Management (MTM)

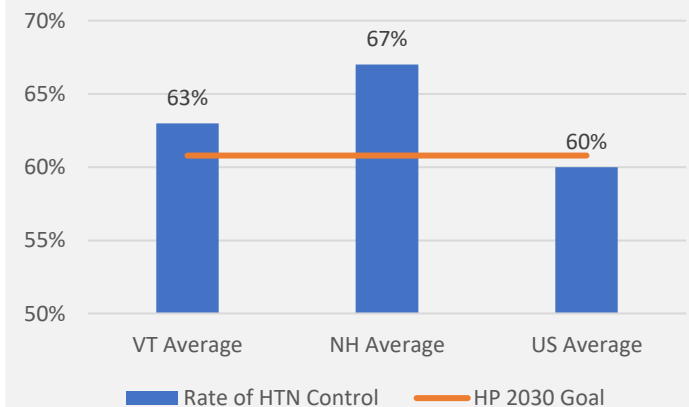
- Eight health centers across VT and NH are developing medication therapy management programs, often in partnership with pharmacists, to assist patients with hypertension, cardiovascular disease, and/or diabetes.

## Food Farmacy Development

- Several health centers are identifying patients who are food insecure and who have, or are at risk for, cardiovascular disease. They provide these patients resources such as CSA shares and supports to mitigate challenges to food security.

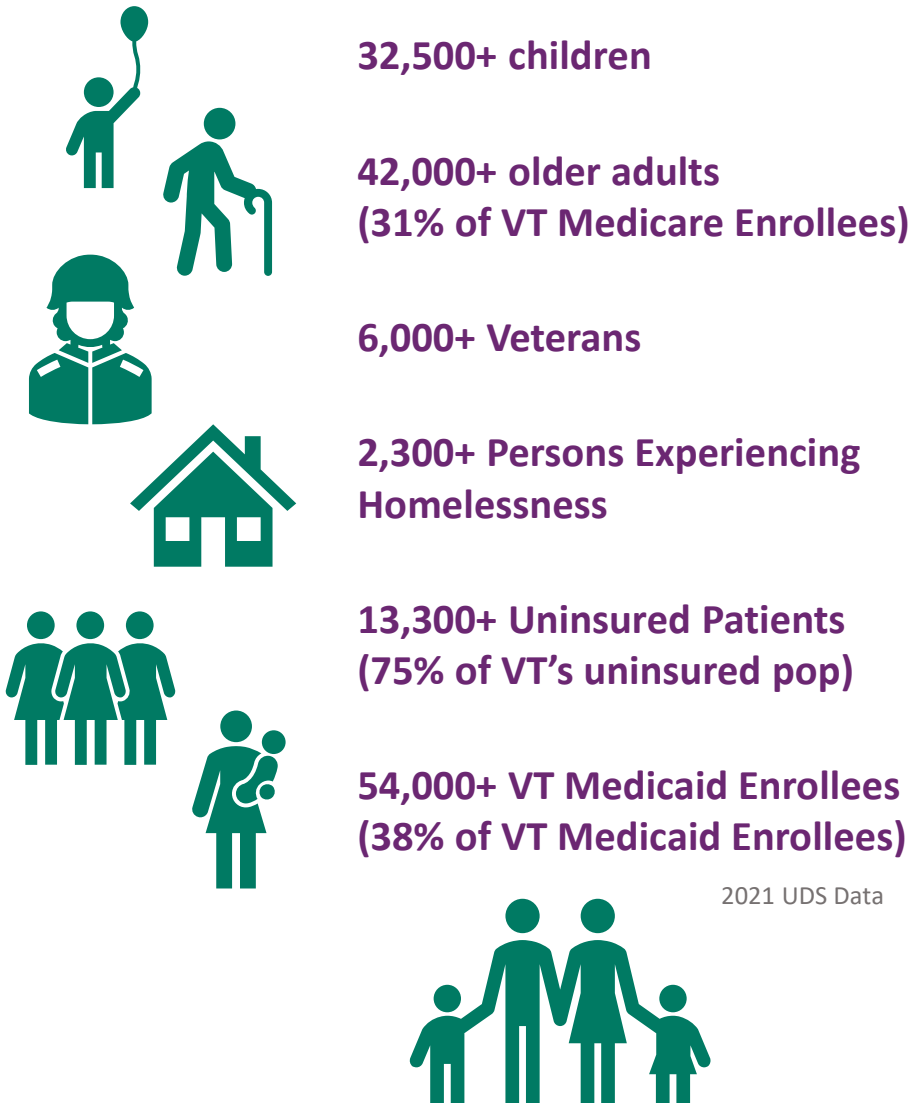


Rate of Hypertension Control



## FQHCs Improve Access to Integrated Primary Care Services

Vermont's FQHCs serve over 1 in 4 (29%) Vermonters including:



### Vermont's FQHCs are a Dental Safety Net



9 of 11 Vermont's FQHCs offer on-site dental care; all offer dental access.

### COVID-19 Response / Public Health Role

VT FQHCs played and continue to play a crucial role in Vermont's COVID-19 response. All FQHCs help patients access COVID-19 testing, including offering testing 7 days a week in priority areas and in response to outbreaks. Many also provide mobile testing services for hard-to-reach populations. Leveraging federal resources, VT FQHCs additionally supplied over 56,000 at-home test kits to patients, staff and community members. All FQHCs have also been community leaders in COVID-19 vaccination – hosting clinics, providing outreach at schools and in the community, and answering patient questions.

Our FQHCs have been on the front lines of other emerging public health concerns, staging flu, and mpox vaccine clinics and providing vital health education to their communities.

# FQHCs are Economic Engines within their Communities

An October 2022 analysis of 2021 data shows that Vermont's FQHCs are:



- directly responsible for 1,614 jobs,
- indirectly responsible for an additional 855 jobs (e.g., jobs of suppliers, contractors, etc.), and
- support another 972 jobs in the region (i.e., these jobs are induced when employees spend wages on goods and services)

...for a total of **3,441 Vermont jobs!**

Economic impact was measured using 2021 IMPLAN Online from IMPLAN Group LLC, IMPLAN System (data and software), [www.IMPLAN.com](http://www.IMPLAN.com).  
Learn more at [www.caplink.org/how-economicimpact-is-measured](http://www.caplink.org/how-economicimpact-is-measured).

## Bi-State's Recruitment Center & Workforce Development

Bi-State's Recruitment Center combines local outreach with national strategic marketing campaigns to recruit clinicians in primary care, oral health, mental health, and substance use disorder treatment. Since its inception in 1994, the Recruitment Center has helped more than 100 employers across Vermont and New Hampshire.



### 25+ Years of Recruitment Experience

Our recruitment team identifies physicians, APRNs, physician assistants, dentists, and mental health and substance use disorder treatment providers who will thrive in our rural communities. Between July 1, 2021, and June 30, 2022, the Recruitment Center identified almost 450 clinicians considering practice in Vermont or New Hampshire within the next two years. We work to connect them with qualifying health care facilities.

We play an important role in monitoring national and regional recruitment trends and advising practices on ways to be innovative and competitive in hiring and retaining clinicians.

We are a resource for information on State and Federal Loan Repayment programs and the J1 Visa Waiver program.

### Strategic Workforce Planning

The COVID-19 pandemic strained an already fragile workforce. Workforce development and planning for Community Health Centers is more important than ever before to ensure that community needs are met.

Bi-State's Recruitment Center is overseeing two projects with FQHCs: 1) to develop comprehensive recruitment and retention plans; and 2) to expand health profession education and training programs within their practices. Our team is helping health centers to develop sound strategies for long-term workforce planning. These strategic workforce plans are informed by data and recognize best practices around recruitment, retention, and internal career pathways. Efforts also include external development strategies such as health professions training programs hosted in the community health settings.

### Primary Care is Delivered by a Team

In FY22, Bi-State's Recruitment Center assisted with the recruitment of 12 primary care physicians, 4 physician specialists, 3 dentists, 6 APRNs, 2 social workers, and 2 mental health counselors. According to Rural Health Works,\* these 29 placements in turn need the support of more than 448 individuals in clinical and administrative roles to run their practices. We increasingly see practices struggling to maintain and recruit qualified members across the full spectrum of the primary care team including nurses as well as medical and dental assistants. The Recruitment Center will focus on the positions we work with and support practices in their efforts to recruit and retain the full primary care team.

Bi-State's Recruitment Center serves all interested NH and VT health care organizations, placing special emphasis on rural and underserved areas. In 2022, we were actively recruiting for a total of 95+ vacancies across our two states. For more information, contact Stephanie Pagliuca, Senior Director of Workforce Development and Recruitment, [spagliuca@bistatepca.org](mailto:spagliuca@bistatepca.org).

\*<http://ruralhealthworks.org/tools-templates/economic-impact>



## Workforce Development and Public Policy

The pressures from workforce shortages in health care have been growing for years due to more primary care providers nearing retirement, nurse shortages, and a lack of dental providers. The COVID-19 pandemic has amplified the workforce crisis. Some have left the workforce entirely. Others remain but struggle with burnout from increased workload or the ability to balance family needs such as childcare. Additionally, the workforce shortages now extend across both clinical and non-clinical positions, which limits a health center's ability to meet patient needs. Even where health centers can fill vacant positions, they often experience high turnover, which requires extensive time and resources for training and onboarding the new staff, further contributing to burnout for existing staff and strain on the practice. In FY2021, the turnover rate was approximately 42%.

This situation is unsustainable and puts the health and lives of Vermonters at risk. Bi-State is working both through its Recruitment Center and its collaboration with Vermont state officials and staff to develop strategic and effective approaches to supporting the current workforce and developing new.

For example, Bi-State serves as a member of the Health Care Workforce Advisory Group, established in Act 155 of 2020, and has contributed to the implementation of the Health Care Workforce Strategic Plan. This Strategic Plan lays out many recommendations to address both the short- and long-term needs. In addition to the continuing to work with a coalition of health care associations and partners to support the recommendations in the strategic plan, Bi-State is also working with key partners to explore and plan the development of a Teaching Health Center Graduation Medical Education program that would support additional family medicine residencies in Vermont and contributing to the primary care workforce pipeline.

### Bi-State Workforce Goals:

- Review and implement high-impact recommendations from the Interstate Telehealth Task Team
- Extend reimbursement for audio-only telehealth
- Explore community-based clinical training
- Explore and plan a Teaching Health Center Graduate Medical Education Program
- Expand scholarship and loan repayment options across broader health care professions

# Vermont Rural Health Alliance (VRHA)

## VRHA Background

The Vermont Rural Health Alliance (VRHA) is a Health Center Controlled Network (HCCN) and a program of Bi-State Primary Care Association created to serve the operational needs of Vermont's health centers in the context of the evolving health care environment.

## VRHA Vision

Maximize population health by addressing root causes and sustaining measurable, concrete positive change in health care.

## VRHA Priorities

Data Intelligence

Health Reform

Sustainability



## Supporting Best Practices in Health Care

VRHA team skills:

- Data Analysis - dashboard/report development
- Quality Improvement/Change Management
- Project Management
- Subject Matter Expertise
- Data Quality Services



## We Help Turn Data into Information

The VRHA team provides annual "Data Roadshows" to guide clinical teams at health centers through their data and tools. We additionally provide trainings on other topics including:

- Cybersecurity
- Compliance with HIE Information Blocking Rules
- Excel Tips and Tricks / Qlik Basics
- Diet Interventions for Patients with Diabetes and Hypertension
- Social Determinants of Health
- Workforce Resiliency

We also staff peer groups for FQHC Medical Directors, Quality Improvement staff, Data Analysts and Informatics staff, and others.

# Food Access and Health Care Consortium

The Food Access and Health Care consortium (FAHC) is a grant-funded program designed to support better integration of food and diet into health care in rural Vermont. We bring together representatives from food systems, food access, public health, and health care sectors to identify gaps in current work in the food and health space and build strategies to bridge those gaps.



By adding a focus on health care and individuals' health outcomes, we support the goals of existing programs in food access and community health, while adding an important dimension of linking food and diet to specific health goals – including evidence-based models for treatment of diet-related chronic health conditions and transition from hospital to home-based care.

## Year 1 Focus Areas

### Outreach Systems connecting:

- Health Care Practices & Community Based Organizations
- Patients & Food Access Programs
- Local Organizations & Statewide Networks

**Medically Tailored Meals** feasibility study.

### Increasing Program Impact

- National Research & Evidence-Based Models
- Peer-to-Peer Learning

### Data & Measurement

### Sustainable Funding

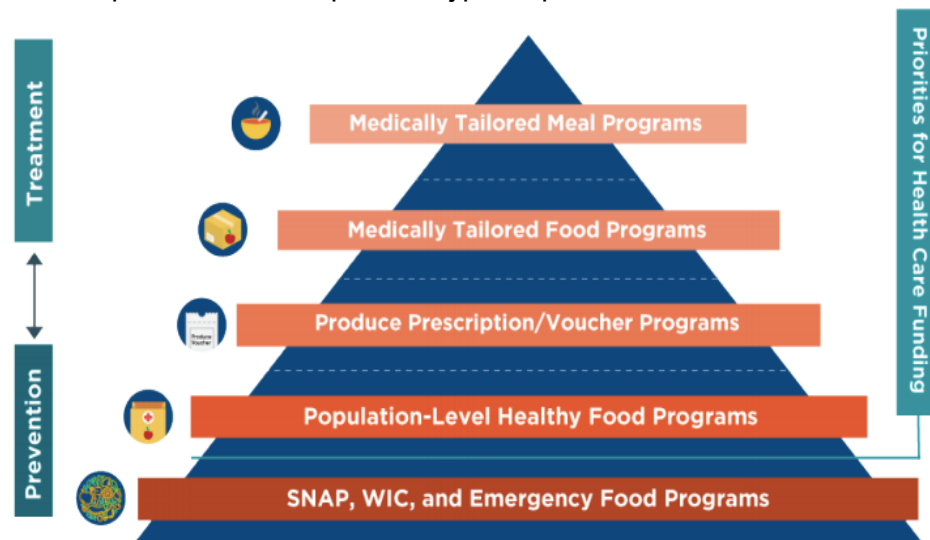
See [VTFoodInHealth.net](https://VTFoodInHealth.net) for more information

## Year 2 Focus Areas

In our second year we have built from Year 1 work to add projects in the following areas:

- **Transportation Barriers** to participation in food & health programs, as part of a broader statewide food security planning project. Vermont Farm to Plate leads this planning work.
- **Pilots at Three FQHCs** NOTCH, Lamoille Health Partners, and Little Rivers Health Care are participating in a 4-year pilot program to link food-based interventions to reducing risk of cardiovascular disease.

We are honored to have received a 2021-2023 rural health care focused **Northern Border Regional Commission (NBRC)-HRSA** grant to expand health care practice types represented in the consortium.



We learn from the work of similar programs in other states, including the Food Is Medicine Coalition in Massachusetts (this graphic borrowed from their 2019 state plan for food and health).

## FQHC Funding

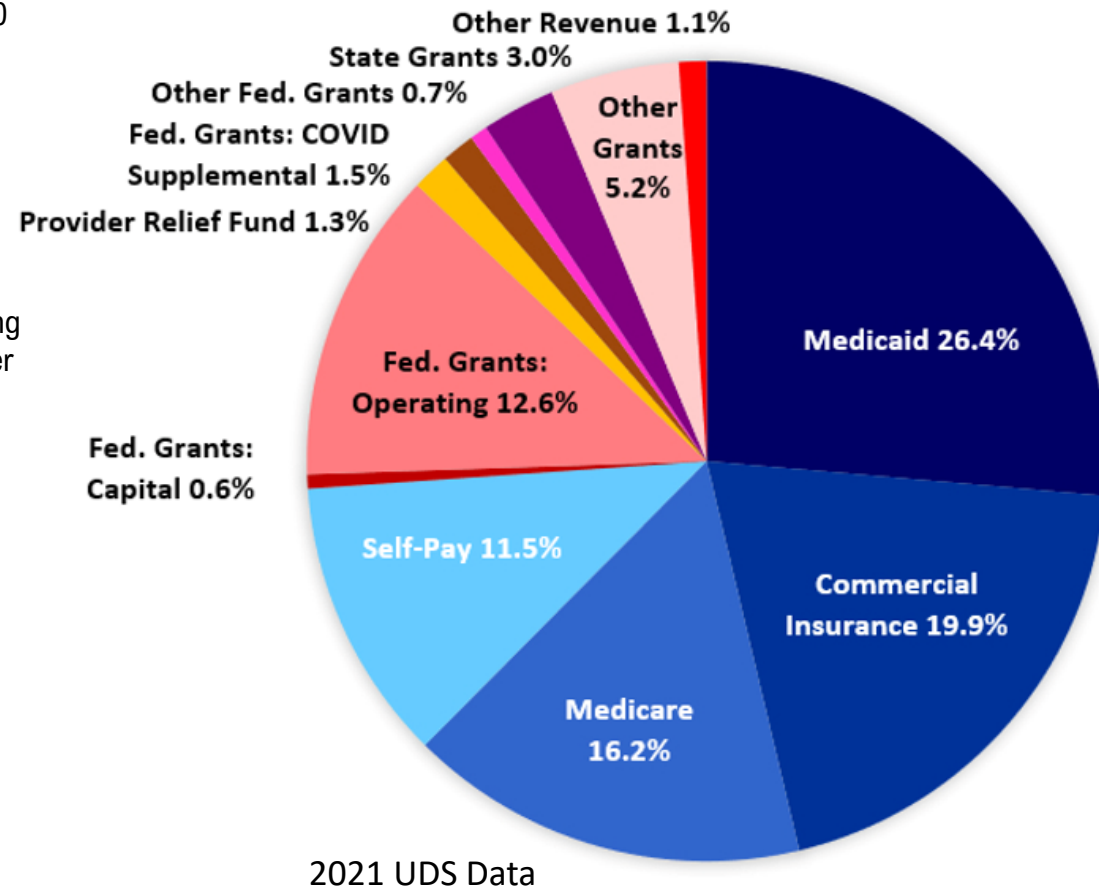
FQHCs are eligible to receive federal appropriations for allowable costs that are not reimbursed by Medicaid, Medicare, commercial payers, and patient self-pay. Some of these costs may include care provided to uninsured and underinsured low-income patients and enabling services, outreach, transportation, and interpretation.

- Federal FQHC grants are awarded based upon a very competitive national application process.
- When FQHCs are awarded federal funds, they must meet strict program, performance, and accountability standards. Almost 100 additional regulations are connected to FQHC status.
- Federal FQHC appropriations are not transferable to any other entity.
- Medicare and Medicaid FQHC reimbursement is a prospective encounter rate.
- FQHCs bill commercial insurers just like any other primary care practice.
- No payer reimburses FQHCs for their full costs. Additional funding streams such as 330 grants and 340B funds allow FQHCs to offer comprehensive services in all corners of the state.

## FQHC and ACO Participation

In 2022, nine out of eleven eligible FQHCs continued their participation in OneCare Vermont. Three of our members serve on the OneCare Board of Managers. A Bi-State policy priority is to shift towards a reimbursement system that prioritizes primary care and provides the resources and flexibilities necessary for our members to meet the health and wellness needs of their patients and communities. This priority aligns with Vermont's goal to improve Vermonters' health and limit the growth of health care costs. The state of Vermont is currently using ACO-based reform as the vehicle for aligning value-based care initiatives across all payers, and Bi-State is working within this all-payer model and ACO structure to support our members in achieving their care goals.

## FQHC Sources of Revenue (2021)



## FQHC Federal Requirements

Federally Qualified Health Centers (FQHCs) are health care practices that have a mission to provide high quality, comprehensive primary care and preventive services regardless of their patients' ability to pay or insurance coverage. FQHCs must successfully compete in a national competition for FQHC designation and funding. Additionally, they must be located in federally-designated medically underserved areas and/or serve federally-designated medically underserved populations. Annually, they submit extensive financial and clinical quality data to their federal regulators, the Health Resources and Services Administration (HRSA) in a submission called Uniform Data System (UDS). Every three years HRSA regulators audit each FQHC with a multi-day operational site visit.

Per Federal Regulations, FQHCs must comply with 90+ requirements. In summary, they must:

- Document the needs of their target populations.
- **Provide all required primary, preventive, enabling health services** (either directly or through established referrals).
- Maintain a core staff as necessary to carry out all required primary, preventive, enabling, and additional health services. Staff must be appropriately credentialed and licensed.
- **Provide services at times and locations that assure accessibility and meet the needs of the population to be served.**
- Provide professional coverage during hours when the health center is closed.
- Ensure their physicians have admitting privileges at one or more referral hospitals to ensure continuity of care. Health centers must firmly establish arrangements for hospitalization, discharge planning, and patient tracking.
- Have a system in place to determine eligibility for patient discounts adjusted on the basis of the patient's ability to pay. **No patient will be denied services based on inability to pay.**
- Have an ongoing Quality Improvement/Quality Assurance program.
- Exercise appropriate oversight and authority over all contracted services.
- Make efforts to establish and maintain collaborative relationships with other health care providers.
- Maintain accounting and internal control systems to safeguard assets and maintain financial stability.
- Have systems in place to maximize collections and reimbursement for costs in providing health services.
- Develop annual budgets that reflect the cost of operations, expenses, and revenues necessary to accomplish the service delivery plans.
- Have systems which accurately collect and organize data for reporting and which support management decision-making.
- Ensure governing boards maintain appropriate authority to oversee operations.
- **Ensure a majority of board members for each health center are patients of the health center.** The board, as a whole, must represent the individuals being served by the health center in terms of demographic factors such as race, ethnicity, and sex.
- Ensure bylaws and/or policies are in place that prohibit conflict of interest by board members, employees, consultants, and those who furnish goods or services to the health center.



# Bi-State's Vermont Member Sites by County

## Addison County

- Community Health (FQHC)
  - Community Health and Dental Shorewell
- Mountain Health Center (FQHC)
  - Mountain Health Center\*
  - Red Clover Family Dentistry\*
  - MAT Mobile Van (mobile)
  - Mount Abraham Unified School District
- Open Door Clinic (VFRC)

## Bennington County

- Battenkill Valley Health Center (FQHC)\*
- Bennington Free Clinic (VFRC)

## Caledonia County

- Northern Counties Health Care (FQHC)
  - Danville Health Center
  - Hardwick Area Health Center
  - Northern Counties Dental Center\*
  - St. Johnsbury Community Health Center
  - Northern Express Care - St. Johnsbury
- St. Johnsbury Health Center (PPNNE)

## Chittenden County

- Community Health Centers (FQHC)
  - Riverside Health Center\*
  - Safe Harbor Health Center\*
  - Pearl Street Youth Health Center
  - H.O. Wheeler School\*
  - South End Health Center\*
  - GoodHEALTH Internal Medicine
  - Winooski Family Health
  - Community Health Centers - Essex
- Health Assistance Program at UVMHC (VFRC)
- Burlington Health Center (PPNNE)
- Williston Health Center (PPNNE)

## Essex County

- Northern Counties Health Care (FQHC)
  - Concord Health Center
  - Island Pond Health and Dental Center\*

## Grand Isle County

- Community Health Centers (FQHC)
  - Champlain Islands Health Center
- Northern Tier Center for Health (FQHC)
  - Alburg Health Center

## Franklin County

- Northern Tier Center for Health (FQHC)

- Enosburg Health Center
- Fairfax Health Center
- Richford Dental Clinic\*
- Richford Health Center
- St. Albans Health Center
- Swanton Health Center\*
- Georgia Health Center
- NOTCH Primary Care
- Swanton Rexall
- NOTCH Pharmacy – Richford
- Fairfax Pharmacy

## Lamoille County

- Lamoille Health Partners (FQHC)
  - Lamoille Health Behavioral Health & Wellness
  - Lamoille Health Family Dentistry\*
  - Lamoille Health Family Medicine, Morrisville
  - Lamoille Health Family Medicine, Stowe
  - Lamoille Health Pediatrics

## Orange County

- Gifford Health Care (FQHC)
  - Chelsea Health Center
  - Gifford Primary Care
  - Kingwood Health Center
  - HealthHub Dental Services (mobile)\*
  - Braintree Elementary School
  - Brookfield Elementary School
  - Randolph Union Middle/High School
  - Randolph Elementary School
  - Randolph Technical Career Center
- Health Connections at Gifford (VFRC)
- Little Rivers Health Care (FQHC)
  - Blue Mountain Union School
  - Bradford Elementary School
  - LRHC at Bradford
  - LRHC at East Corinth
  - LRHC at Newbury
  - LRHC at Wells River
  - LRHC at Valley Vista
  - Oxbow High School
  - Newbury Elementary School
  - Thetford Elementary School
  - Waits River Valley School

## Orleans County

- Northern Counties Health Care (FQHC)

- Orleans Dental Center (FQHC)\*
- Northern Express Care - Newport

## Rutland County

- Community Health (FQHC)
  - Community Health Allen Pond
  - Community Health Brandon
  - Community Health Castleton Family
  - Community Health Pediatrics
  - Community Health Dental Clinic\*
  - Community Kids Dental Rutland\*
  - Community Health Mettowee
  - Community Health Rutland
  - Community Health North Main
  - Express Care Castleton
  - Express Care Rutland
- Rutland County Free Clinic and Dental Clinic\* (VFRC)
- Rutland Health Center (PPNNE)

## Washington County

- Barre Health Center (PPNNE)
- Gifford Health Care (FQHC)
  - Gifford Health Center at Berlin
- People's Health & Wellness Clinic (VFRC)
- The Health Center (FQHC)
  - Cabot Health Services (school-based)
  - Ronald McDonald Dental Care Mobile (mobile)\*
  - The Health Center Main Site\*
  - Twinfield School
  - Calais Elementary School
  - East Montpelier Elementary School
  - Maplehill School

## Windham County

- Brattleboro Health Center (PPNNE)
- North Star Health (FQHC)
  - Rockingham Health Center
  - Mountain Valley Health Center

## Windsor County

- Gifford Health Care (FQHC)

- Bethel Health Center
- Rochester Health Center
- Twin River Health Center

- North Star Health (FQHC)
  - Chester Dental Center\*
  - The Ludlow Health Center
  - The Ludlow Dental Center\*
  - Springfield Health Center
  - North Star Vision
  - Edgar May Health Center
  - Springfield High School
  - Elm Hill School
  - Riverside Middle School
  - Union Street School
- Valley Health Connections (VFRC)
- Good Neighbor Health Clinic & Red Logan Dental Clinic\* (VFRC)
- Windsor Community Clinic (VFRC)
- White River Junction Health Center (PPNNE)

## Sullivan County in New Hampshire

- North Star Health (FQHC)
  - Charlestown Family Medicine

## Grafton County in New Hampshire

- Good Neighbor Lebanon Health Clinic (VFRC)

*\*site provides dental services (FQHC) Federally Qualified Health Center (PPNNE) Planned Parenthood of Northern New England (VFRC) Vermont's Free and Referral Clinics*

# Bi-State Primary Care Association's Vermont Member Sites By Organization

## **Battenkill Valley Health Center (FQHC)**

1. Battenkill Valley Health Center\*

## **Community Health Centers (FQHC)**

1. Champlain Islands Health Center
2. GoodHEALTH Internal Medicine
3. Pearl Street Youth Health Center
4. Riverside Health Center\*
5. Safe Harbor Health Center\*
6. H.O. Wheeler School\*
7. South End Health Center\*
8. Winooski Family Health
9. Community Health Centers – Essex

## **Community Health (FQHC)**

1. Community Health Allen Pond
2. Community Health Brandon
3. Community Health Castleton
4. Community Health Pediatrics
5. Community Dental Rutland\*
6. Community Kids Dental Rutland\*
7. Community Health Mettowee
8. Community Health Rutland
9. Community Health and Dental Shorewell\*
10. Community Health North Main
11. Express Care Castleton
12. Express Care Rutland

## **Gifford Health Care (FQHC)**

1. Bethel Health Center
2. Chelsea Health Center
3. Gifford Health Center at Berlin
4. Gifford Primary Care
5. Rochester Health Center
6. Twin River Health Center
7. Kingwood Health Center
8. Sharon Health Center
9. Gifford OB/GYN and Midwifery
10. Gifford Pediatric and Adolescent Medicine
11. HealthHub Dental Services
12. Randolph Union Middle/High School
13. Randolph Elementary School
14. Braintree Elementary School
15. Brookfield Elementary School
16. Randolph Technical Career Center

## **Lamoille Health Partners (FQHC)**

1. Lamoille Health Behavioral Health & Wellness
2. Lamoille Health Family Dentistry\*
3. Lamoille Health Family Medicine, Morrisville
4. Lamoille Health Family Medicine, Stowe
5. Lamoille Health Pediatrics
6. Community Health Pharmacy

## **Little Rivers Health Care (FQHC)**

1. Blue Mountain Union School
2. Bradford Elementary School
3. LRHC at Bradford
4. LRHC at East Corinth
5. LRHC at Newbury
6. LRHC at Wells River
7. Oxbow High School
8. Newbury Elementary School
9. Thetford Elementary School
10. Valley Vista
11. Waits River Valley School

## **Mountain Health Center (FQHC)**

1. Mountain Health Center
2. Red Clover Family Dentistry\*
3. MAT Mobile Van
4. Mount Abraham Unified School District

## **North Star Health (FQHC)**

1. Charlestown Family Medicine (NH)
2. Chester Dental Center\*
3. North Star Vision
4. Ludlow Health & Dental Center\*
5. Mountain Valley Health Center
6. Rockingham Health Center
7. Springfield Health Center
8. Edgar May Health Center
9. Springfield High School
10. Elm Hill School
11. Riverside Middle School
12. Union Street School

## **The Health Center (FQHC)**

1. Cabot Health Services (school-based)
2. The Health Center Main Site\*
3. Ronald McDonald Care Mobile\*
4. Twinfield School
5. Calais Elementary School
6. East Montpelier Elementary School
7. Maplehill School

## **Northern Counties Health Care (FQHC)**

1. Concord Health Center
2. Danville Health Center
3. Hardwick Area Health Center
4. Island Pond Health & Dental Center\*
5. Northern Counties Dental Center\*
6. Orleans Dental Center\*
7. St. Johnsbury Community Health Center
8. Northern Express Care – St. Johnsbury
9. Northern Express Care – Newport

## **Northern Tier Center for Health (FQHC)**

1. Alburg Health Center
2. Enosburg Health Center
3. Fairfax Health Center
4. Richford Health Center
5. Richford Health Center & Dental Clinic\*
6. St. Albans Health Center
7. Swanton Health Center\*
8. Georgia Health Center
9. NOTCH Primary Care
10. Swanton Rexhall
11. NOTCH Pharmacy – Richford
12. Fairfax Pharmacy

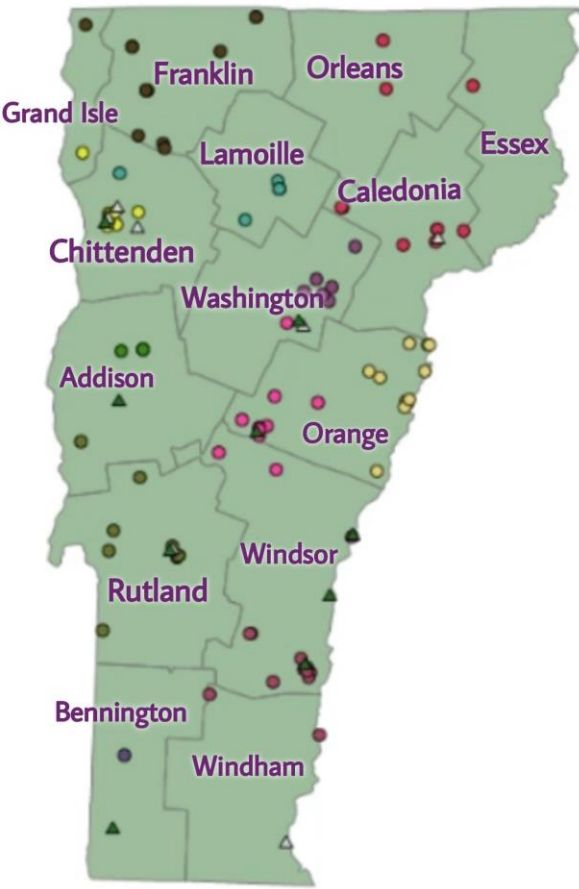
## **Planned Parenthood of Northern New England**

1. Barre Health Center
2. Brattleboro Health Center
3. Burlington Health Center
4. Rutland Health Center
5. St. Johnsbury Health Center
6. White River Junction Health Center
7. Williston Health Center

## **Vermont's Free and Referral Clinics**

1. Bennington Free Clinic
2. Good Neighbor Health Clinic
3. Good Neighbor Health Clinic – Lebanon
4. Red Logan Dental Clinic\*
5. Health Assistance Program at UVM Medical Center
6. Health Connections at Gifford
7. Open Door Clinic\*
8. People's Health & Wellness Clinic\*
9. Rutland County Free Clinic and Dental Clinic\*
10. Valley Health Connections
11. Windsor Community Clinic at Mt. Ascutney

# Bi-State's Vermont Members Legislative Representation



## Organization (Circles)

- Battenkill Valley Health Center (FQHC)
- Community Health Centers of Burlington (FQHC)
- Community Health (FQHC)
- Gifford Health Care (FQHC)
- Lamoille Health Partners (FQHC)
- Little Rivers Health Care (FQHC)
- Mountain Health Center (FQHC)
- Northern Counties Health Care (FQHC)
- Northern Tier Center for Health (FQHC)
- North Star Health (FQHC)\*
- The Health Center (FQHC)
- ▲ Planned Parenthood of Northern New England
- ▲ Vermont Free & Referral Clinics

## Community Health Centers (FQHC)

1. Chittenden Central District, Senator Philip Baruth (D/P)
2. Chittenden Central District, Senator Martine Larocque Gulick (D)
3. Chittenden Central District, Senator Tanya Vyhovsky (P/D)
4. Chittenden North District, Senator Irene Wrenner (D)
5. Chittenden South East District, Senator Thomas Chittenden (D)
6. Chittenden South East District, Senator Virginia "Ginny" Lyons (D)
7. Chittenden South East District, Senator Kesha Ram Hinsdale (D)
8. Grand Isle District, Senator Dick Mazza (D)
9. Chittenden-1 District, Representative Jana Brown (D)
10. Chittenden-10 District, Representative Kate Nugent (D)
11. Chittenden-11 District, Representative Brian Minier (D)
12. Chittenden-12 District, Representative Martin LaLonde (D)
13. Chittenden-13 District, Representative Tiffany Bluemle (D)
14. Chittenden-13 District, Representative Gabrielle Stebbins (D)
15. Chittenden-14 District, Representative Barbara Rachelson (D)
16. Chittenden-14 District, Representative Mary-Katherine Stone (D/P)
17. Chittenden-15 District, Representative Brian Cina (P/D)
18. Chittenden-15 District, Representative Troy Headrick (P/D)
19. Chittenden-16 District, Representative Jill Krowinski (D)
20. Chittenden-16 District, Representative Kate Logan (P/D)
21. Chittenden-17 District, Representative Emma Mulvaney-Stanak (P/D)
22. Chittenden-18 District, Representative Robert Hooper (D)
23. Chittenden-18 District, Representative Carol Ode (D)
24. Chittenden-19 District, Representative Sarah "Sarita" Austin (D)
25. Chittenden-19 District, Representative Patrick Brennan (R)
26. Chittenden-2 District, Representative Angela Arsenault (D)
27. Chittenden-2 District, Representative Erin Brady (D)
28. Chittenden-20 District, Representative Seth Chase (D)
29. Chittenden-20 District, Representative Curt Taylor (D)
30. Chittenden-21 District, Representative Daisy Berbeco (D)
31. Chittenden-21 District, Representative Taylor Small (P/D)
32. Chittenden-22 District, Representative Karen Dolan (D)
33. Chittenden-22 District, Representative Lori Houghton (D)
34. Chittenden-23 District, Representative Leonora Dodge (D)
35. Chittenden-23 District, Representative Rey Garofano (D)
36. Chittenden-24 District, Representative Alyssa Black (D)
37. Chittenden-25 District, Representative Julia Andrews (D)
38. Chittenden-3 District, Representative Edye Graning (D)
39. Chittenden-3 District, Representative Trevor Squirrel (D)
40. Chittenden-4 District, Representative Phil Pouech (D)
41. Chittenden-5 District, Representative Chea Waters Evans (D)
42. Chittenden-6 District, Representative Kate Lalley (D)
43. Chittenden-7 District, Representative Jessica Brumsted (D)
44. Chittenden-8 District, Representative Noah Hyman (D)
45. Chittenden-9 District, Representative Emilie Krasnow (D)
46. Chittenden-Franklin District, Representative Christopher Mattos (R)
47. Chittenden-Franklin District, Representative Chris Taylor (R)
48. Washington-Chittenden District, Representative Thomas Stevens (D)
49. Washington-Chittenden District, Representative Theresa Wood (D)
50. Grand Isle-Chittenden District, Representative Josie Leavitt (D)
51. Grand Isle-Chittenden District, Representative Michael Morgan (R)

## Battenkill Valley Health Center (FQHC)

1. Bennington District, Senator Brian Campion (D)
2. Bennington District, Senator Dick Sears Jr. (D)
3. Bennington-1, Representative Nelson Brownell (D)
4. Bennington-2, Representative Timothy R. Corcoran II (D)
5. Bennington-2, Representative Dane Whitman (D)
6. Bennington-3, Representative David Durfee (D)
7. Bennington-4, Representative Seth Bongartz (D)
8. Bennington-4, Representative Kathleen James (D)
9. Bennington-5, Representative Jim Carroll (D)
10. Bennington-5, Representative Mary A. Morrissey (R)
11. Bennington-Rutland, Representative Mike Rice (D)

## Community Health (FQHC)

1. Rutland District, Senator Brian Collamore (R)
2. Rutland District, Senator David Weeks (R)
3. Rutland District, Senator Terry Williams (R)
4. Rutland-1 District, Representative Patricia McCoy (R)
5. Rutland-10 District, Representative William Canfield (R)
6. Rutland-11 District, Representative James Harrison (R)
7. Rutland-2 District, Representative Thomas Burditt (R)
8. Rutland-2 District, Representative Arthur Peterson (R)
9. Rutland-3 District, Representative Jarrod Sammis (R)
10. Rutland-4 District, Representative Paul Clifford (R)
11. Rutland-5 District, Representative Eric Maguire (R)
12. Rutland-6 District, Representative Mary E. Howard (D)
13. Rutland-7 District, Representative William Nottle (D)
14. Rutland-8 District, Representative Charles "Butch" Shaw (R)
15. Rutland-9 District, Representative Stephanie Jerome (D)
16. Rutland-Bennington, Representative Robin Chesnut-Tangerman (D)
17. Rutland-Windsor District, Representative Logan Nicoll (D)
18. Addison-Rutland District, Representative Joseph Andriano (D)
19. Bennington-Rutland, Representative Mike Rice (D)

## Lamoille Health Partners (FQHC)

1. Lamoille District, Senator Richard Westman (R)
2. Lamoille-1 District, Representative Jed Lipsky (I)
3. Lamoille-2 District, Representative Kate Donnelly (D)
4. Lamoille-2 District, Representative Daniel Noyes (D)
5. Lamoille-3 District, Representative Lucy Boyden (D)
6. Lamoille-Washington District, Representative Saudia LaMont (D)
7. Lamoille-Washington District, Representative Avram Patt (D)
8. Orleans-Lamoille District, Representative Mark Higley (R)
9. Orleans-Lamoille District, Representative Michael Marcotte (R)



# Bi-State's Vermont Members Legislative Representation

## Gifford Health Care (FQHC)

1. Orange District, Senator Mark A. MacDonald (D)
2. Windsor District, Senator Alison Clarkson (D)
3. Windsor District, Senator Dick McCormack (D)
4. Windsor District, Senator Rebecca White (D)
5. Washington District, Senator Ann Cummings (D)
6. Washington District, Senator Andrew Perchlik (D/P)
7. Washington District, Senator Anne Watson (D/P)
8. Orange-1 District, Representative Carl Demrow (D)
9. Orange-2 District, Representative Monique Priestley (D)
10. Orange-3 District, Representative Rodney Graham (R)
11. Orange-Caledonia, Representative Joseph Parsons (R)
12. Orange-Washington-Addison, Rep. Philip Jay Hooper (D)
13. Orange-Washington-Addison, Rep. Larry Satcowitz (D)
14. Windsor-Addison, Representative Kirk White (D/P)
15. Windsor-Orange-1, Representative John O'Brien (D)
16. Windsor-Orange-2, Representative Rebecca Holcombe (D)
17. Windsor-Orange-2, Representative James Masland (D)

## Little Rivers Health Care (FQHC)

1. Orange District, Senator Mark A. MacDonald (D)
2. Orange-1 District, Representative Carl Demrow (D)
3. Orange-2 District, Representative Monique Priestley (D)
4. Orange-3 District, Representative Rodney Graham (R)
5. Orange-Caledonia, Representative Joseph Parsons (R)
6. Windsor-Orange-1, Representative John O'Brien (D)
7. Windsor-Orange-2, Representative Rebecca Holcombe (D)
8. Windsor-Orange-2, Representative James Masland (D)

## Mountain Health Center (FQHC)

1. Addison District, Senator Christopher Bray (D)
2. Addison District, Senator Ruth Hardy (D)
3. Addison-1 District, Representative Robin Scheu (D)
4. Addison-1 District, Representative Amy Sheldon (D)
5. Addison-2 District, Representative Peter Conlon (D)
6. Addison-3 District, Representative Matthew Birong (D)
7. Addison-3 District, Representative Diane Lanpher (D)
8. Addison-4 District, Representative Mari Cordes (D)
9. Addison-4 District, Representative Caleb Elder (D)
10. Addison-5 District, Representative Jubilee McGill (D)
11. Addison-Rutland, Representative Joseph Andriano (D)

## Planned Parenthood of Northern New England

Statewide

## Vermont's Free and Referral Clinics

Statewide

## Northern Counties Health Care (FQHC)

1. Caledonia District, Senator Jane Kitchel (D)
2. Essex District, Senator Russ Ingalls (R)
3. Orleans District, Senator Robert Starr (D)
4. Caledonia-1 District, Representative Bobby Farlice-Rubio (D)
5. Caledonia-2 District, Representative Joseph "Chip" Troiano (D)
6. Caledonia-3 District, Representative Dennis Labounty (D)
7. Caledonia-3 District, Representative Charles Wilson (R)
8. Caledonia-Essex District, Representative Scott Beck (R)
9. Caledonia-Essex District, Representative R. Scott Campbell (D)
10. Caledonia-Washington District, Representative Henry Pearl (D)
11. Essex-Caledonia District, Representative Terri Lynn Williams (R)
12. Essex-Orleans District, Representative Larry Labor (R)
13. Lamoille-Washington District, Representative Saudia LaMont (D)
14. Lamoille-Washington District, Representative Avram Patt (D)
15. Orange-Caledonia District, Representative Joseph Parsons (R)
16. Orleans-1 District, Representative Brian Smith (R)
17. Orleans-2 District, Representative Woodman Page (R)
18. Orleans-3 District, Representative Dave Templeman (D)
19. Orleans-4 District, Representative Katherine Sims (D)
20. Orleans-Lamoille District, Representative Mark Higley (R)
21. Orleans-Lamoille District, Representative Michael Marcotte (R)

## The Health Center (FQHC)

1. Washington District, Senator Ann Cummings (D)
2. Washington District, Senator Andrew Perchlik (D/P)
3. Washington District, Senator Anne Watson (D/P)
4. Washington-1 District, Representative Anne B. Donahue (R)
5. Washington-1 District, Representative Kenneth Goslant (R)
6. Washington-2 District, Representative Katherine "Kari" Dolan (D)
7. Washington-2 District, Representative Dara Torre (D)
8. Washington-3 District, Representative Peter Anthony (D)
9. Washington-3 District, Representative Jonathan Williams (D)
10. Washington-4 District, Representative Conor Casey (D)
11. Washington-4 District, Representative Kate McCann (D)
12. Washington-5 District, Representative Ela Chapin (D)
13. Washington-6 District, Representative Marc Mihaly (D)
14. Washington-Chittenden District, Representative Thomas Stevens (D)
15. Washington-Chittenden District, Representative Theresa Wood (D)
16. Washington-Orange District, Representative Gina Galfetti (R)
17. Washington-Orange District, Representative Francis McFaun (R)

## North Star Health (FQHC)

1. Windham District, Senator Wendy Harrison (D)
2. Windham District, Senator Nader Hashim (D)
3. Windsor District, Senator Alison Clarkson (D)
4. Windsor District, Senator Dick McCormack (D)
5. Windsor District, Senator Rebecca White (D)
6. Windham-1 District, Representative Sara Coffey (D)
7. Windham-2 District, Representative Laura Sibilia (I)
8. Windham-3 District, Representative Michelle Bos-Lun (D)
9. Windham-3 District, Representative Leslie Goldman (D)
10. Windham-4 District, Representative Michael Mrowicki (D)
11. Windham-5 District, Representative Emily Long (D)
12. Windham-6 District, Representative Tristan Roberts (D)
13. Windham-7 District, Representative Emilie Kornheiser (D)
14. Windham-8 District, Representative Mollie S. Burke (P/D)
15. Windham-9 District, Representative Tristan Tolen (D)
16. Windham-Windsor-Bennington, Representative Kelly Pajala (I)
17. Windsor-Windham District, Representative Heather Chase (D)
18. Windsor-1 District, Representative John L. Bartholomew (D)
19. Windsor-1 District, Representative Elizabeth Burrows (D/P)
20. Windsor-2 District, Representative John Arrison (D)
21. Windsor-3 District, Representative Alice M. Emmons (D)
22. Windsor-3 District, Representative Kristi Morris (D)
23. Windsor-5 District, Representative Tesha Buss (D)

## Northern Tier Center for Health (FQHC)

1. Franklin District, Senator Randy Brock (R)
2. Franklin District, Senator Robert Norris (R)
3. Grand Isle District, Senator Dick Mazza (D)
4. Franklin-1 District, Representative Ashley Bartley (R)
5. Franklin-1 District, Representative Carolyn Branagan (R)
6. Franklin-2 District, Representative Eileen Dickinson (R)
7. Franklin-3 District, Representative Michael McCarthy (D)
8. Franklin-4 District, Representative Thomas Oliver (R/D)
9. Franklin-4 District, Representative Matt Walker (R)
10. Franklin-5 District, Representative Lisa Hango (R)
11. Franklin-5 District, Representative Wayne Laroche (R)
12. Franklin-6 District, Representative James Gregoire (R)
13. Franklin-7 District, Representative Penny Demar (R)
14. Franklin-8 District, Representative Casey Toof (R)
15. Grand Isle-Chittenden, Representative Josie Leavitt (D)
16. Grand Isle-Chittenden, Representative Michael Morgan (R)
17. Chittenden-Franklin, Representative Chris Taylor (R)

# Bi-State's Vermont Member Legislative Representatives List

## Biennium 2022 – 2023

---

**Representative Joseph Andriano (D) Addison-Rutland**  
Community Health  
Mountain Health Center

**Representative Julia Andrews (D) Chittenden-25**  
Community Health Centers

**Representative Peter Anthony (D) Washington-3**  
Planned Parenthood of Northern New England  
The Health Center  
Vermont's Free & Referral Clinics

**Representative John Arrison (D) Windsor-2**  
North Star Health

**Representative Angela Arsenaault (D) Chittenden-2**  
Community Health Centers

**Representative Sarah "Sarita" Austin (D) Chittenden-19**  
Community Health Centers

**Representative Ashley Bartley (R) Franklin-1**  
Community Health Centers  
Northern Tier Center for Health

**Representative John L. Bartholomew (D) Windsor-1**  
Vermont's Free & Referral Clinics  
North Star Health

**Senator Philip Baruth (D/P) Chittenden Central District**  
Community Health Centers

**Representative Scott Beck (R) Caledonia-Essex**  
Northern Counties Health Care  
Planned Parenthood of Northern New England

**Representative Daisy Berbeco (D) Chittenden-21**  
Community Health Centers

**Representative Matthew Birong Jr. (D) Addison-3**  
Community Health Centers  
Community Health  
Mountain Health Center

**Representative Alyssa Black (D) Chittenden-24**  
Community Health Centers

**Representative Tiffany Bluemle (D) Chittenden-13**  
Community Health Centers

**Representative Michelle Bos-Lum (D) Windham-3**  
North Star Health

**Representative Erin Brady (D) Chittenden-2**  
Community Health Centers

**Representative Carolyn Branagan (R) Franklin-1**  
Community Health Centers  
Northern Tier Center for Health

**Senator Christopher Bray (D) Addison District**  
Community Health  
Mountain Health Center

**Representative Patrick Brennan (R) Chittenden-19**  
Community Health Centers

**Senator Randy Brock (R) Franklin District**  
Northern Tier Center for Health

**Representative Jana Brown (D) Chittenden-1**  
Community Health Centers

**Representative Nelson Brownell (D) Bennington-1**  
Battenkill Valley Health Center

**Representative Seth Bongartz (D) Bennington-4**  
Battenkill Valley Health Center

**Representative Lucy Boyden (D) Lamoille-3**  
Lamoille Health Partners

**Representative Jessica Brumsted (D) Chittenden-7**  
Community Health Centers

**Representative Thomas Burditt (R) Rutland-2**  
Community Health

**Representative Mollie S. Burke (P/D) Windham-8**  
North Star Health  
Planned Parenthood of Northern New England

**Representative Elizabeth Burrows (D/P) Windsor-1**  
Vermont's Free & Referral Clinics  
North Star Health

**Representative Tesha Buss (D) Windsor-5**  
North Star Health

**Representative R. Scott Campbell (D) Caledonia-Essex**  
Northern Counties Health Care  
Planned Parenthood of Northern New England

**Senator Brian Campion (D) Bennington District**  
Battenkill Valley Health Center

**Representative William Canfield (R) Rutland-10**  
Community Health

**Representative Jim Carroll (D) Bennington-5**  
Planned Parenthood of Northern New England  
Vermont's Free & Referral Clinics  
Battenkill Valley Health Center

**Representative Conor Casey (D) Washington-4**  
The Health Center

**Representative Ela Chapin (D) Washington-5**  
Community Health Centers  
The Health Center

**Representative Seth Chase (D) Chittenden-20**  
Community Health Centers



# Bi-State's Vermont Member Legislative Representatives List

## Biennium 2022 – 2023

---

**Representative Heather Chase (D) Windsor-Windham**  
North Star Health

**Rep. Robin Chesnut-Tangerman (P) Rutland-Bennington**  
Community Health

**Senator Thomas Chittenden (D) Chittenden South East District**  
Community Health Centers

**Representative Kevin "Coach" Christie (D) Windsor-6**  
Little Rivers Health Care  
Planned Parenthood of Northern New England  
Vermont's Free & Referral Clinics

**Representative Brian Cina (P/D) Chittenden-15**  
Community Health Centers

**Senator Alison Clarkson (D) Windsor District**  
North Star Health

**Representative Paul Clifford (R) Rutland-4**  
Community Health

**Representative Sara Coffey (D) Windham-1**  
North Star Health

**Representative Esme Cole (D) Windsor-6**  
North Star Health  
Gifford Health Care

**Senator Brian Collamore (R) Rutland District**  
Community Health

**Representative Peter Conlon (D) Addison-2**  
Community Health Centers  
Community Health  
Gifford Health Care

**Representative Timothy R. Corcoran II (D) Bennington-2**  
Battenkill Valley Health Center

**Representative Mari Cordes (D/P) Addison-4**  
Mountain Health Center

**Senator Ann Cummings (D) Washington District**  
Lamoille Health Partners  
Community Health Centers  
Gifford Health Care  
Northern Counties Health Care  
The Health Center

**Representative Penny Demar (R) Franklin-7**  
Northern Tier Center for Health

**Representative Carl Demrow (D) Orange-1**  
Gifford Health Care  
Little Rivers Health Care

**Representative Eileen Dickinson (R) Franklin-2**  
Northern Tier Center for Health

**Representative Leonora Dodge (D) Chittenden-23**  
Community Health Centers

**Representative Karen Dolan (D) Chittenden-22**  
Community Health Centers

**Representative Katherine "Kari" Dolan (D) Washington-2**  
The Health Center

**Representative Anne B. Donahue (R) Washington-1**  
The Health Center

**Representative Kate Donnally (D) Lamoille-2**  
Lamoille Health Partners  
Planned Parenthood of Northern New England

**Representative David Durfee (D) Bennington-3**  
Battenkill Valley Health Center

**Representative Caleb Elder (D) Addison-4**  
Mountain Health Center

**Representative Alice M. Emmons (D) Windsor-3**  
Vermont's Free & Referral Clinics  
North Star Health

**Representative Chea Waters Evans (D) Chittenden-5**  
Community Health Centers

**Representative Bobby Farlice-Rubio (D) Caledonia-1**  
Little Rivers Health Care  
Northern Counties Health Care

**Representative Gina Galfetti (R) Washington-Orange**  
The Health Center  
Gifford Health Care

**Representative Rey Garofano (D) Chittenden-23**  
Community Health Centers

**Representative Kenneth Goslant (R) Washington-1**  
The Health Center

**Representative Leslie Goldman (D) Windham-3**  
North Star Health

**Representative Rodney Graham (R) Orange-3**  
Little Rivers Health Care  
Gifford Health Care

**Representative Edye Graning (D) Chittenden-3**  
Community Health Centers

**Representative James Gregoire (R) Franklin-6**  
Northern Tier Center for Health

**Senator Martine Larocque Gulick (D) Chittenden Cent. District**  
Community Health Centers

# Bi-State's Vermont Member Legislative Representatives List

## Biennium 2022 – 2023

---

**Representative Lisa Hango (R) Franklin-5**  
Northern Tier Center for Health

**Senator Ruth Hardy (D) Addison District**  
Community Health  
Mountain Health Center

**Representative James Harrison (R) Rutland-11**  
Community Health

**Senator Wendy Harrison (D) Windham District**  
North Star Health

**Senator Nader Hashim (D) Windham District**  
North Star Health

**Representative Troy Headrick (P) Chittenden-15**  
Community Health Centers

**Representative Mark Higley (R) Orleans-Lamoille**  
Lamoille Health Partners

**Senator Kesha Ram Hinsdale (D) Chittenden South East District**  
Community Health Centers

**Representative Rebecca Holcombe (D) Windsor-Orange-2**  
Gifford Health Care

**Representative Robert Hooper (D) Chittenden-18**  
Community Health Centers

**Representative Philip Jay Hooper (D) Orange-Washington-Addison**  
Gifford Health Care  
Vermont's Free & Referral Clinics

**Representative Lori Houghton (D) Chittenden-22**  
Community Health Centers

**Representative Mary E. Howard (D) Rutland-6**  
Community Health  
Vermont's Free & Referral Clinics

**Representative Noah Hyman (D) Chittenden-8**  
Community Health Centers

**Senator Russ Ingalls (R) Essex District**  
Northern Counties Health Care

**Representative Kathleen James (D) Bennington-4**  
Battenkill Valley Health Center

**Representative Stephanie Jerome (D) Rutland-9**  
Community Health

**Representative Emilie Kornheiser (D) Windham-7**  
Battenkill Valley Health Center  
North Star Health

**Senator Jane Kitchel (D) Caledonia District**  
Little Rivers Health Care  
Northern Counties Health Care

**Representative Emilie Krasnow (D) Chittenden-9**  
Community Health Centers

**Representative Jill Krowinski (D) Chittenden-16**  
Community Health Centers

**Representative Dennis Labounty (D) Caledonia-3**  
Northern Counties Health Care

**Representative Kate Lalley (D) Chittenden-6**  
Community Health Centers

**Representative Martin LaLonde (D) Chittenden-12**  
Community Health Centers

**Representative Saudia LaMont (D) Lamoille-Washington**  
Community Health Centers  
Lamoille Health Partners  
Northern Counties Health Care

**Representative Diane Lanpher (D) Addison-3**  
Community Health Centers  
Community Health  
Mountain Health Center

**Representative Larry Labor (R) Essex-Orleans**  
Northern Counties Health Care  
Indian Stream Health Center

**Representative Wayne Laroche (R) Franklin-5**  
Northern Tier Center for Health

**Representative Josie Leavitt (D) Grand Isle-Chittenden**  
Northern Tier Center for Health  
Community Health Centers

**Representative Jed Lipsky (I) Lamoille-1**  
Lamoille Health Partners

**Representative Kate Logan (P) Chittenden-16**  
Community Health Centers

**Representative Emily Long (D) Windham-5**  
North Star Health

**Senator Virginia "Ginny" Lyons (D) Chittenden District**  
Community Health Centers

**Senator Mark A. MacDonald (D) Orange District**  
Gifford Health Care  
Little Rivers Health Care

**Representative Eric Maguire (R) Rutland-5**  
Community Health  
Planned Parenthood of Northern New England

# Bi-State's Vermont Member Legislative Representatives List

## Biennium 2022 – 2023

---

**Representative Michael Marcotte (R) Orleans-Lamoille**  
Northern Counties Health Care

**Representative James Masland (D) Windsor-Orange-2**  
Gifford Health Care

**Representative Christopher Mattos (R) Chittenden-Franklin**  
Community Health Centers

**Senator Dick Mazza (D) Grand Isle District**  
Northern Tier Center for Health  
Community Health Centers

**Representative Michael McCarthy (D) Franklin-3**  
Planned Parenthood of Northern New England  
Northern Tier Center for Health

**Senator Dick McCormack (D) Windsor District**  
North Star Health

**Representative Patricia McCoy (R) Rutland-1**  
Community Health

**Representative Francis McFaun (R) Washington-Orange**  
Gifford Health Care  
The Health Center

**Representative Jubilee McGill (D) Addison-5**  
Mountain Health Center

**Representative Kate McCann (D) Washington-4**  
The Health Center

**Representative Brian Minier (D) Chittenden-11**  
Community Health Centers

**Representative Michael Morgan (R) Grand Isle-Chittenden**  
Community Health Centers  
Northern Tier Center for Health

**Representative Kristi Morris (D) Windsor-3**  
North Star Health  
Vermont's Free & Referral Clinics

**Representative Mary A. Morrissey (R) Bennington-5**  
Battenkill Valley Health Center  
Planned Parenthood of Northern New England  
Vermont's Free & Referral Clinics

**Representative Michael Mrowicki (D) Windham-4**  
Vermont's Free & Referral Clinics  
North Star Health

**Representative Marc Mihaly (D) Washington-6**  
The Health Center

**Representative Emma Mulvaney-Stanak (P) Chittenden-17**  
Community Health Centers

**Representative Logan Nicoll (D) Rutland-Windsor**  
Community Health  
North Star Health

**Representative William Notte (D) Rutland-7**  
Community Health

**Senator Robert Norris (R) Franklin District**  
Northern Tier Center for Health

**Representative Daniel Noyes (D) Lamoille-2**  
Lamoille Health Partners  
Planned Parenthood of Northern New England

**Representative Kate Nugent (D) Chittenden-10**  
Community Health Centers

**Representative John O'Brien (D) Windsor-Orange-1**  
Gifford Health Care

**Representative Carol Ode (D) Chittenden-18**  
Community Health Centers

**Representative Thomas Oliver (R/D) Franklin-4**  
Northern Tier Center for Health

**Representative Woodman Page (R) Orleans-2**  
Planned Parenthood of Northern New England

**Representative Kelly Pajala (I) Windham-Windsor-Bennington**  
Battenkill Valley Health Center  
North Star Health

**Representative Joseph Parsons (R) Orange-Caledonia**  
Little Rivers Health Care  
Northern Counties Health Care

**Representative Carolyn W. Partridge (D) Windham-3**  
The Health Center

**Representative Avram Patt (D) Lamoille-Washington**  
Community Health Centers  
Lamoille Health Partners  
Northern Counties Health Care

**Representative Henry Pearl (D) Caledonia-Washington**  
Northern Counties Health Care  
The Health Center

**Senator Andrew Perchlik (D/P) Washington District**  
Lamoille Health Partners  
Community Health Centers  
Gifford Health Care  
Northern Counties Health Care  
The Health Center

**Representative Arthur Peterson (D) Rutland-2**  
Community Health

# Bi-State's Vermont Member Legislative Representatives List

## Biennium 2022 – 2023

---

**Representative Phil Pouech (D) Chittenden-4**  
Community Health Centers

**Representative Monique Priestley (D) Orange-2**  
Little Rivers Health Care

**Representative Barbara Rachelson (D) Chittenden-14**  
Community Health Centers

**Representative Brian K. Savage (R) Franklin-4**  
Northern Tier Center for Health

**Representative Robin Scheu (D) Addison-1**  
Vermont's Free & Referral Clinics  
Planned Parenthood of Northern New England  
Mountain Health Center  
Community Health Centers

**Representative David Potter (D) Rutland-2**  
Community Health

**Representative Ann Pugh (D) Chittenden-7-2**  
Community Health Centers

**Representative Constance Quimby (R) Essex-Caledonia**  
Northern Counties Health Care

**Representative Barbara Rachelson (D) Chittenden-6-6**  
Community Health Centers

**Representative Zachariah Ralph (P/D) Windsor-1**  
Vermont's Free & Referral Clinics  
North Star Health

**Representative Marybeth Redmond (D) Chittenden-8-1**  
Community Health Centers

**Representative Mike Rice (D) Bennington-Rutland**  
Community Health

**Representative Tristan Roberts (D) Windham-6**  
Battenkill Valley Health Center

**Senator John Rodgers (D) Essex-Orleans District**  
Northern Counties Health Care

**Representative Lucy Rogers (D) Lamoille-3**  
Lamoille Health Partners

**Representative Carl Rosenquist (R) Franklin-1**  
Community Health Centers  
Northern Tier Center for Health

**Representative Jarrod Sammis (R) Rutland-3**  
Community Health

**Representative Larry Satcowitz (D) Orange-Washington-Addison**  
Vermont's Free & Referral Clinics  
Gifford Health Care

**Representative Brian K. Savage (R) Franklin-4**  
Northern Tier Center for Health

**Representative Robin Scheu (D) Addison-1**  
Vermont's Free & Referral Clinics  
Planned Parenthood of Northern New England  
Mountain Health Center  
Community Health Centers

**Senator Dick Sears Jr. (D) Bennington District**  
Battenkill Valley Health Center

**Representative Charles "Butch" Shaw (R) Rutland-8**  
Community Health

**Representative Amy Sheldon (D) Addison-1**  
Planned Parenthood of Northern New England  
Vermont's Free & Referral Clinics  
Mountain Health Center  
Community Health Centers

**Representative Laura Sibilia (I) Windham-2**  
Battenkill Valley Health Center

**Representative Katherine Sims (D) Orleans-4**  
Northern Counties Health Care

**Representative Taylor Small (P) Chittenden-21**  
Community Health Centers

**Representative Brian Smith (R) Orleans-1**  
Northern Counties Health Care

**Representative Trevor Squirrell (D) Chittenden-3**  
Community Health Centers

**Senator Robert Starr (D) Orleans District**  
Northern Counties Health Care

**Representative Gabrielle Stebbins (D) Chittenden-13**  
Community Health Centers

**Representative Thomas Stevens (D) Washington-Chittenden**  
Community Health Centers  
The Health Center

**Representative Mary-Katherine Stone (D) Chittenden-14**  
Community Health Centers

# Bi-State's Vermont Member Legislative Representatives List

## Biennium 2022 – 2023

---

**Representative Vicki Strong (R) Orleans-Caledonia**  
Northern Counties Health Care

**Representative Heather Surprenant (P/D) Windsor-4**  
Gifford Health Care  
North Star Health

**Representative Linda Joy Sullivan (D) Bennington-Rutland**  
Community Health

**Representative Mary Sullivan (D) Chittenden-6-5**  
Community Health Centers

**Representative Randall Szott (D) Windsor-4-1**  
Gifford Health Care

**Representative Curt Taylor (D) Chittenden-20**  
Community Health Centers

**Representative Chris Taylor (R) Chittenden-Franklin**  
Community Health Centers

**Representative Dave Templeman (D) Orleans-3**  
Northern Counties Health Care

**Representative Thomas Terenzini (R) Rutland-4**  
Community Health

**Representative Tristan Toleno (D) Windham-9**  
North Star Health

**Representative Casey Toof (R) Franklin-8**  
Northern Tier Center for Health  
Planned Parenthood of Northern New England

**Representative Dara Torre (D) Washington-2**  
Community Health Centers  
The Health Center

**Representative George W. Till (D) Chittenden-3**  
Community Health Centers

**Representative Tristan Toleno (D) Windham-2-3**  
North Star Health

**Representative Catherine Toll (D) Caledonia-Washington**  
Northern Counties Health Care  
The Health Center

**Representative Maida Townsend (D) Chittenden-7-4**  
Community Health Centers

**Representative Matthew Trieber (D) Windham-3**  
North Star Health  
The Health Center

**Representative Joseph "Chip" Troiano (D) Caledonia-2**  
Northern Counties Health Care

**Senator Martine Tanya Vyhovsky (P/D) Chittenden Cent. District**  
Community Health Centers

**Representative Matt Walker (R) Franklin-4**  
Northern Tier Center for Health

**Senator Anne Watson (D/P) Washington District**  
Lamoille Health Partners  
Northern Counties Health Care  
The Health Center  
Gifford Health Care  
Community Health Centers

**Senator David Weeks (R) Rutland District**  
Community Health

**Senator Richard Westman (R) Lamoille District**  
Lamoille Health Partners

**Senator Rebecca White (D) Windsor District**  
North Star Health  
Little Rivers Health Care  
Planned Parenthood of Northern New England  
Vermont's Free & Referral Clinics

**Representative Dane Whitman (D) Bennington-2**  
Battenkill Valley Health Center

**Representative Jonathan Williams (D) Washington-3**  
Planned Parenthood of Northern New England  
The Health Center  
Vermont's Free & Referral Clinics

**Representative Terri Lynn Williams (R) Essex-Caledonia**  
Northern Counties Health Care

**Senator Terry Williams (R) Rutland District**  
Community Health

**Representative Charles Wilson (R) Caledonia-3**  
Northern Counties Health Care

**Senator Rebecca White (D) Windsor District**  
North Star Health

**Representative Kirk White (D/P) Windsor-Addison**  
Gifford Health Care

**Representative Theresa Wood (D) Washington-Chittenden**  
Lamoille Health Partners  
Community Health Centers  
The Health Center

**Senator Irene Wrenner (D) Chittenden North District**  
Community Health Centers